

## Obrazová příloha



1.



2.



3.



4.

5.



6.



7.



8.







9.



10.



11.

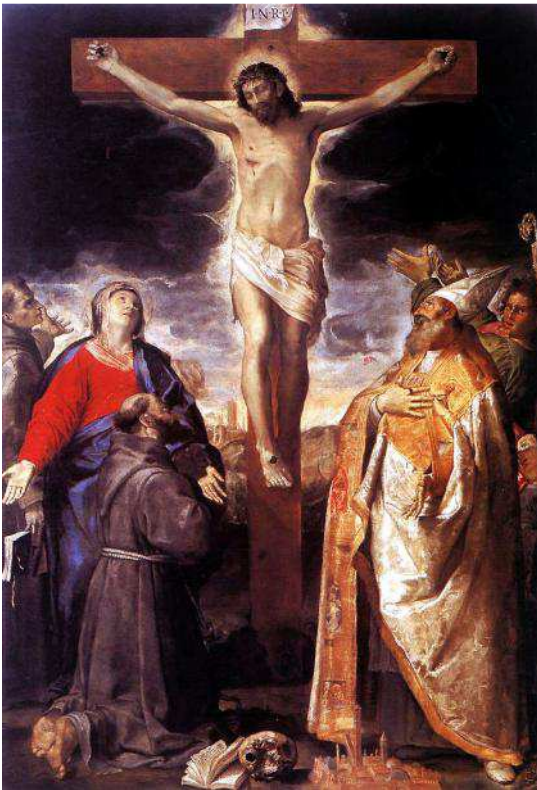




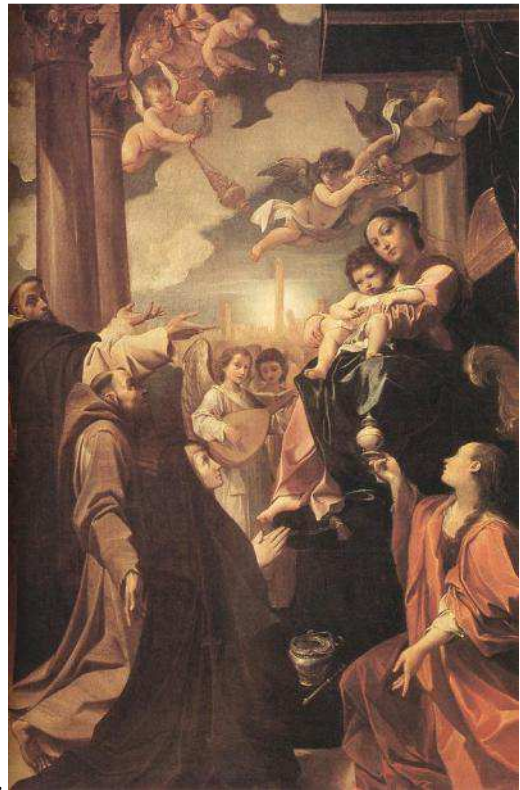
12.



13.



14.



15.

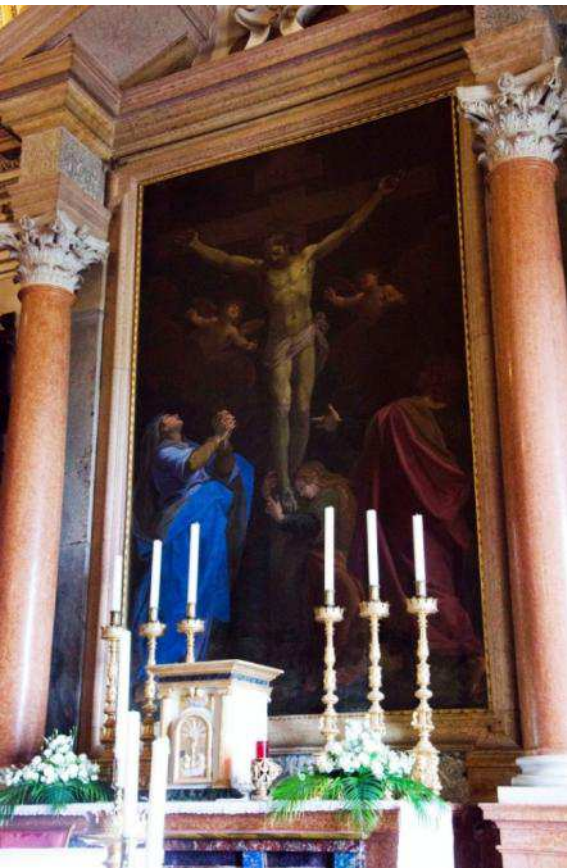




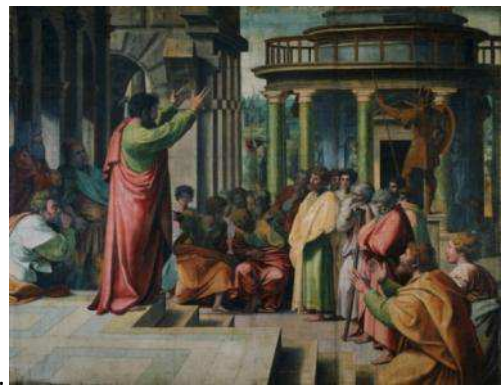
16.



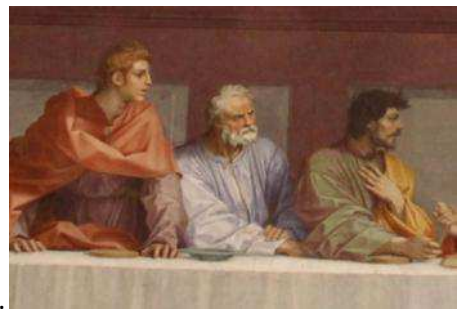
17.



18.



19.



20.

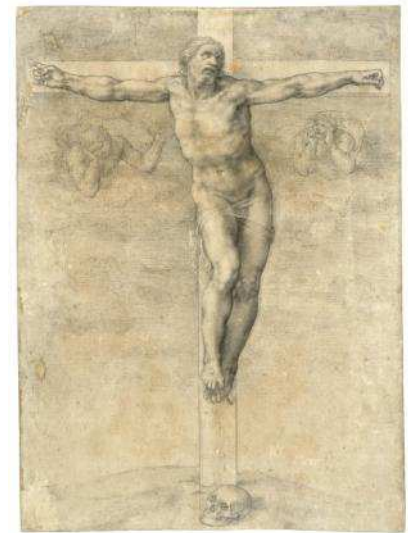




21.



22.



23.



24.



25.



26.



27.



28.



29.





30.



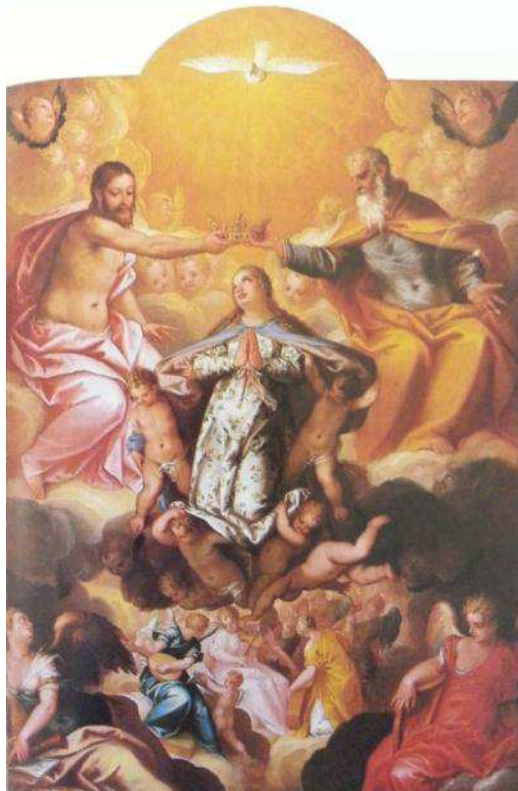
31.



32.



33.

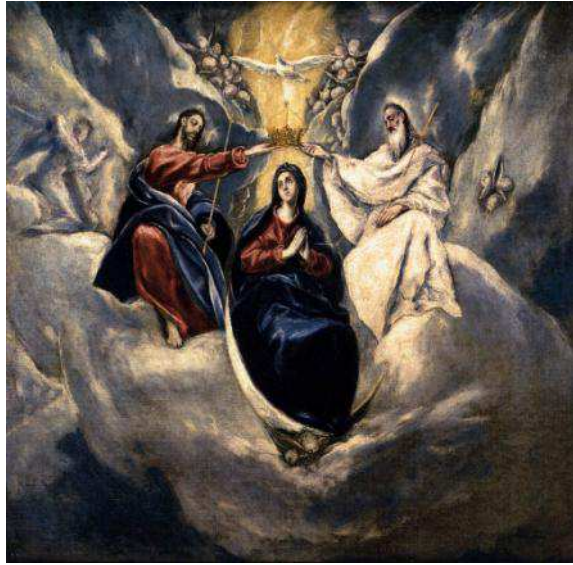






34.

DEFOVIT POTENTE DE SEDIS ET EXALTAVIT NIMIS.



35.



36.

VENI DE LIBANO SPONSA MEA  
VENI CORONABERIS  
Cor. 9. C. 1. p. 1. C. 1. p. 1.

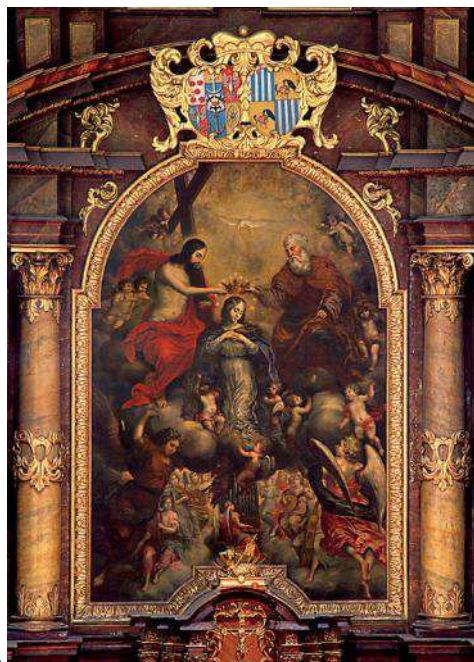


37.



38.

VENI DE LIBANO SPONSA MEA  
VENI CORONABERIS  
Cor. 9. C. 1. p. 1. C. 1. p. 1.  
ANVERPÆ

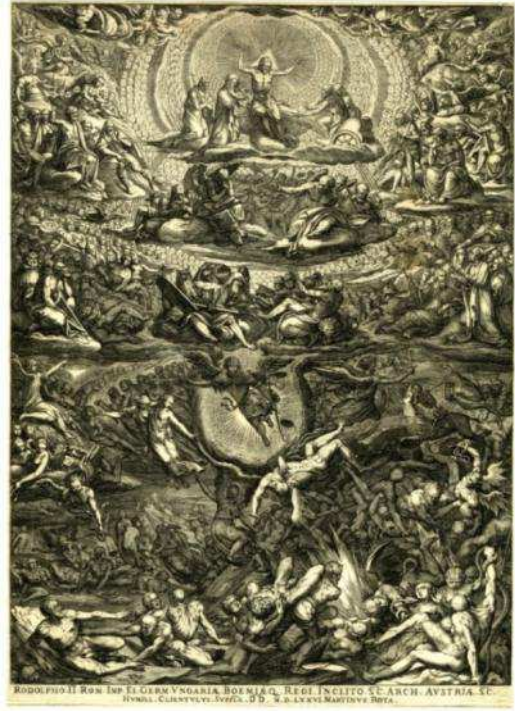


39.





40.



41.



42.



43.

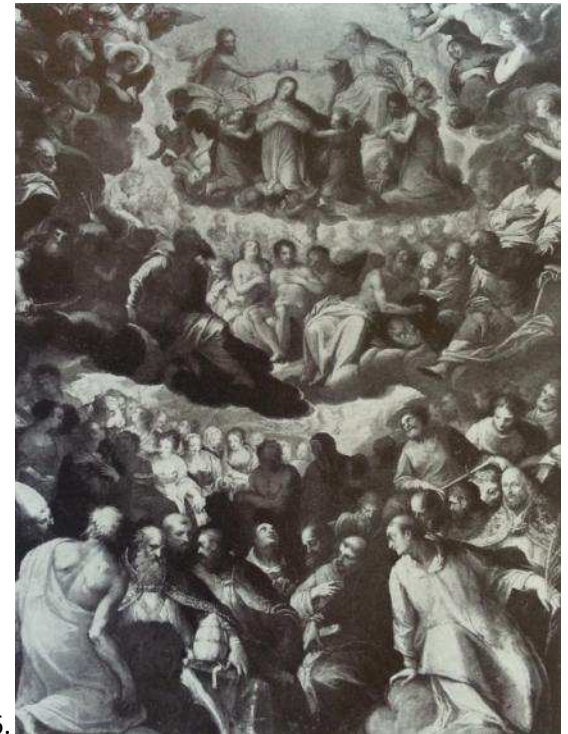




44.

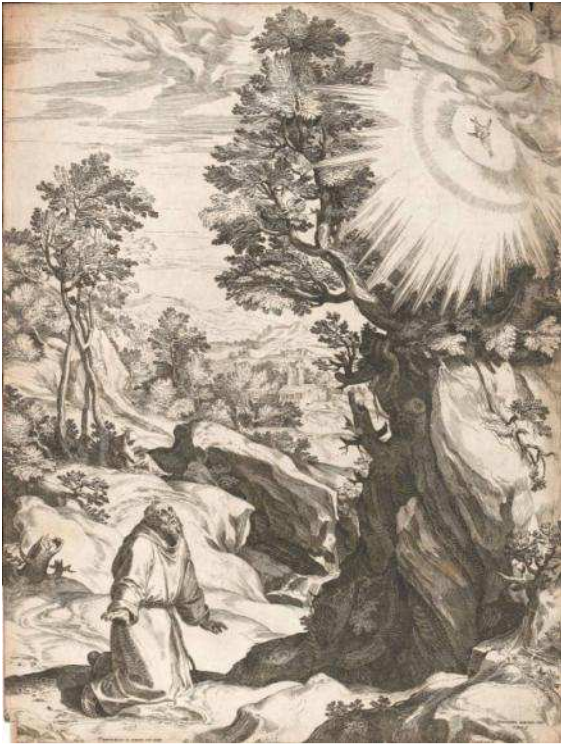


45.

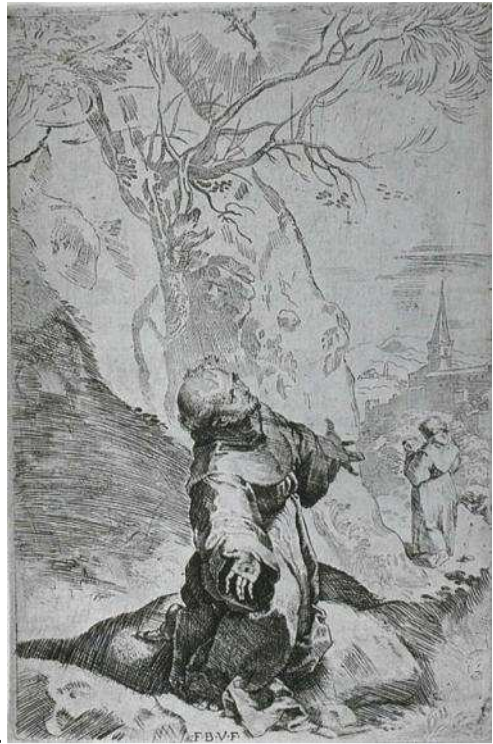


46.





47.



48.



49.



50.



51.



52.



53.



54.



SIGNASTI DOMINE SERVVM TVVM FRANCISCVM SIGNIS REDEMPTIONIS NOSTRÆ  
*Raph. Sadler pinxit. A. 1764.*



55.



56.



57.







58.



59.



60.



61.



62.



63.



64.

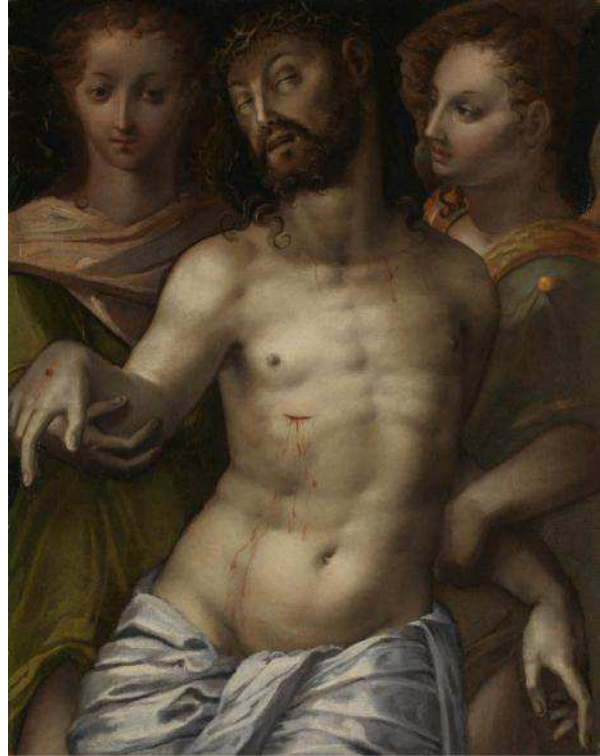




65.



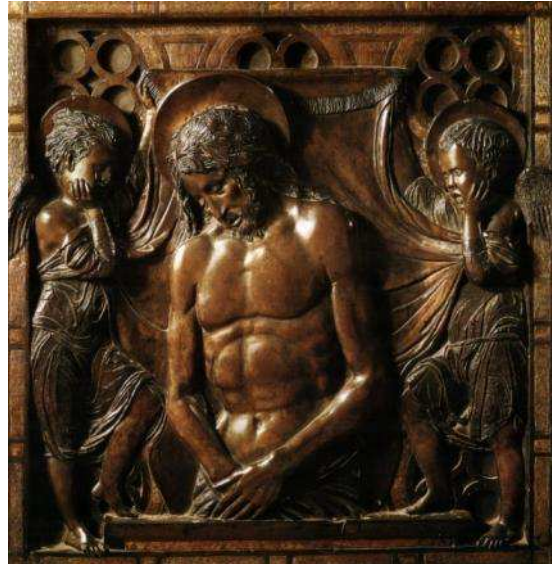
66.



67.



68.

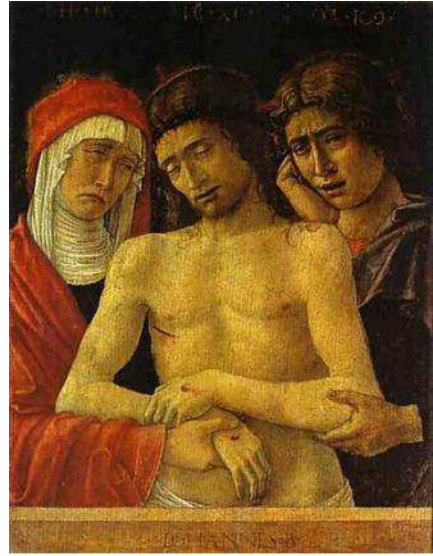




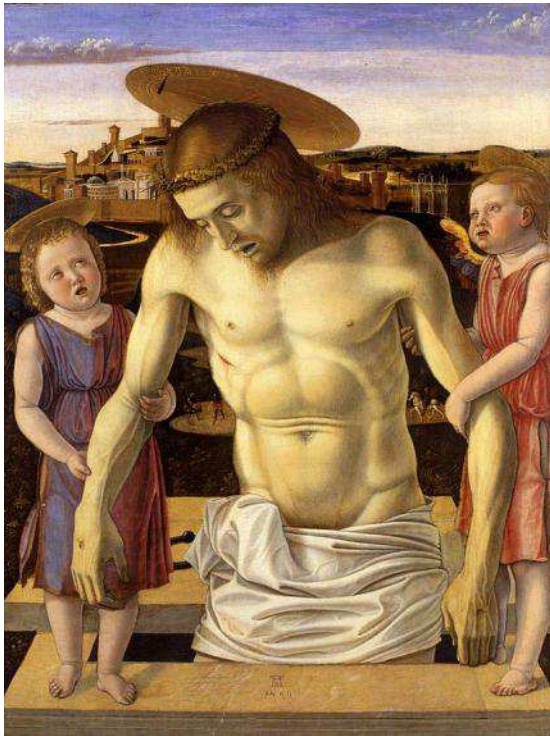
69.



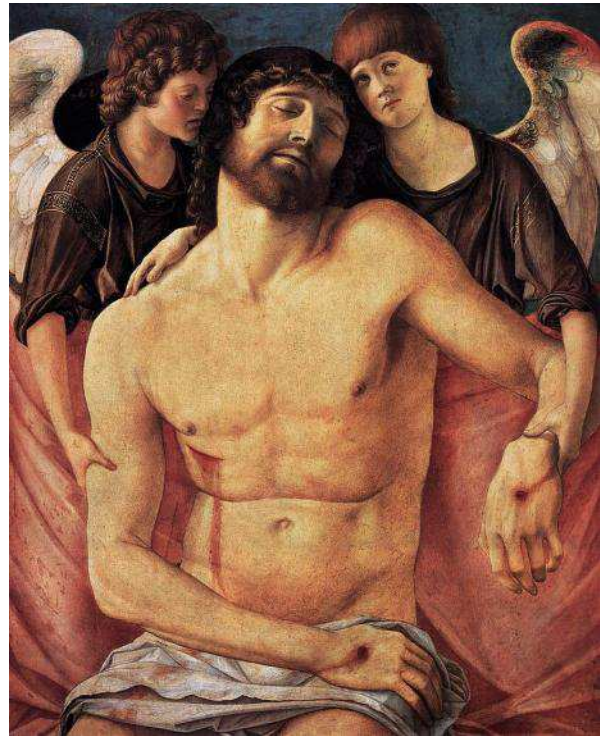
70.



71.

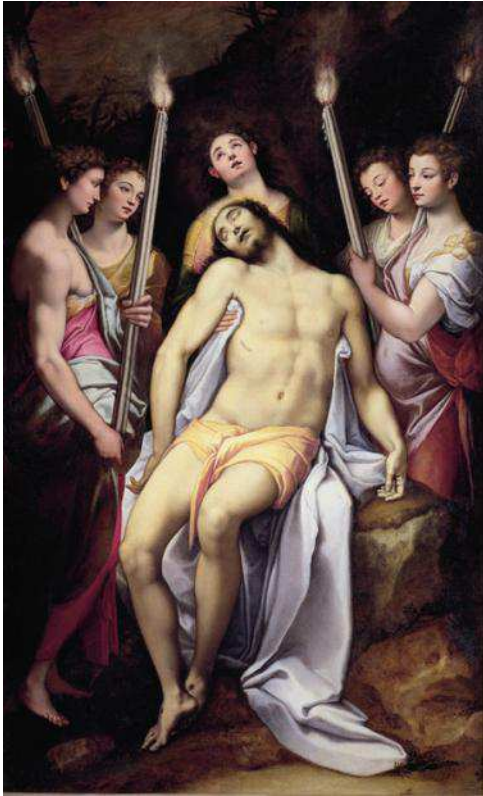


72.





73.



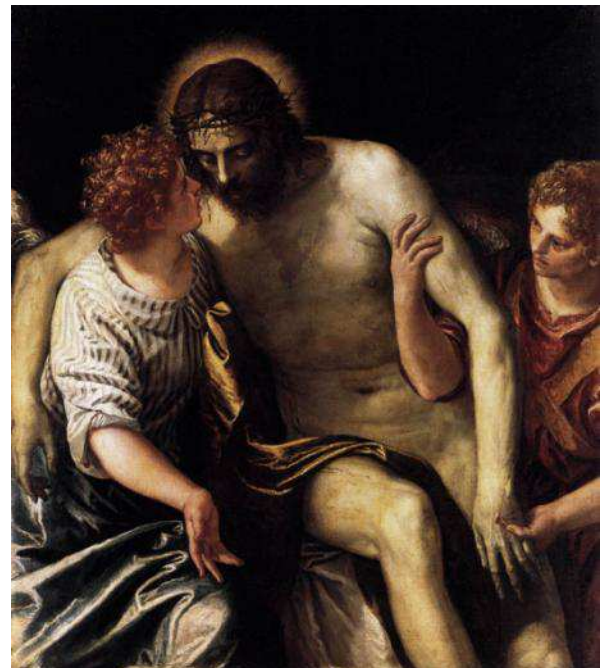
74.



75.



76.

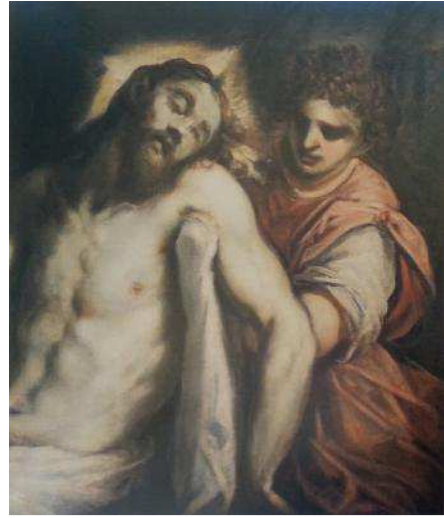




77.



78.



79.

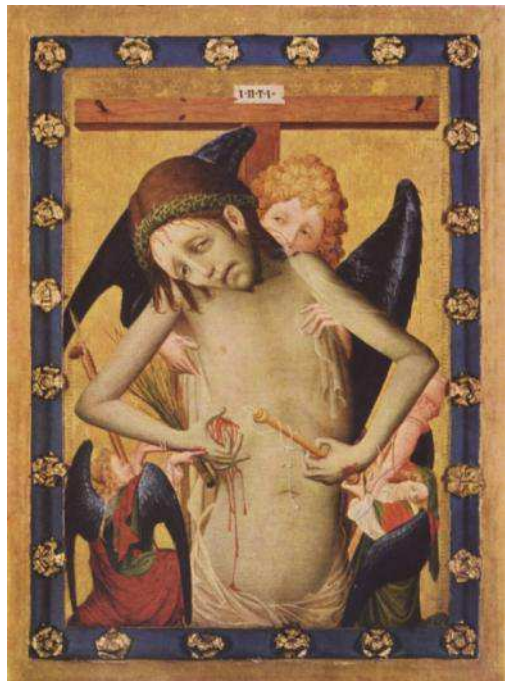


80.





81.



82.



83.



84.

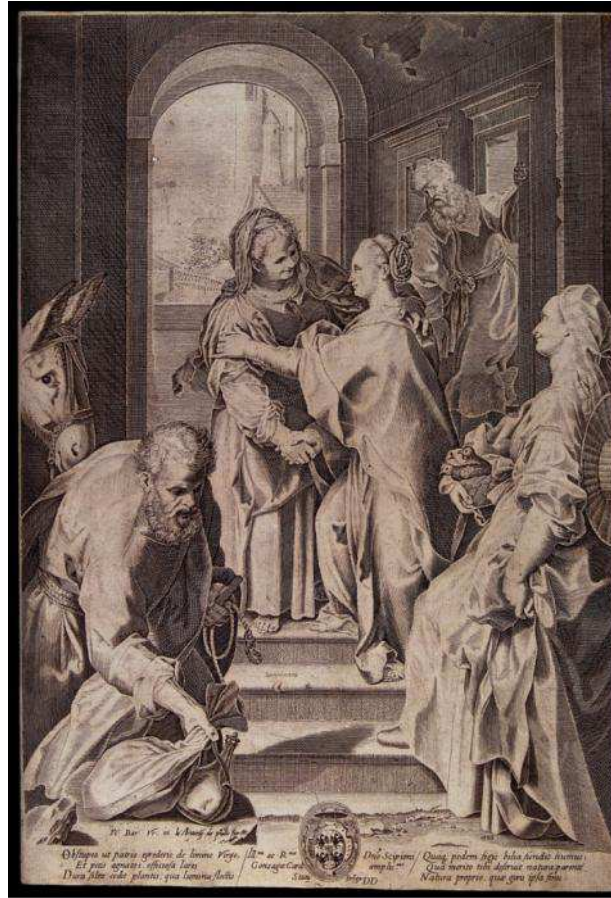




85.



86.



87.





88.



89.



90.



91.



92.

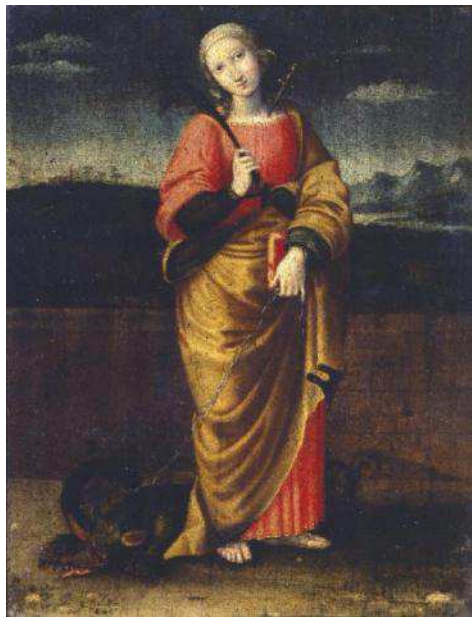


93.





94.



95.



96.



97.



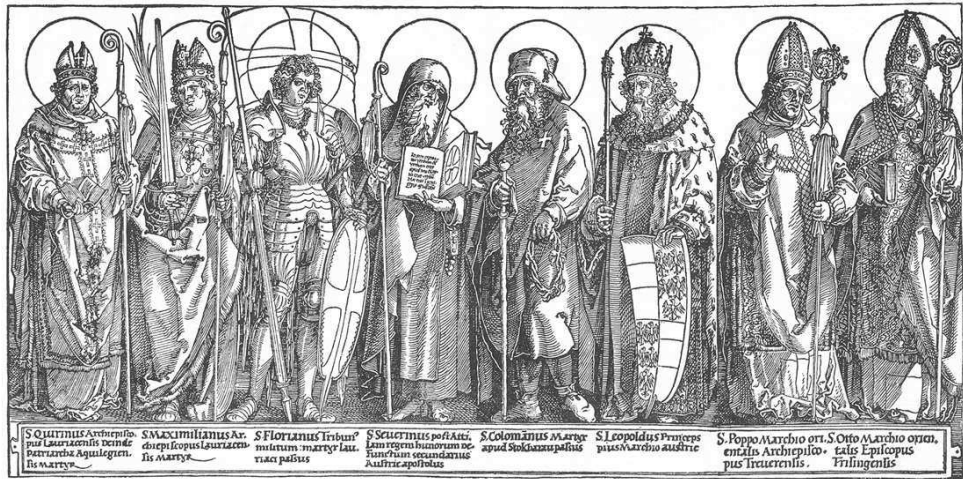
98.



99.







100.



101.



102.



103.



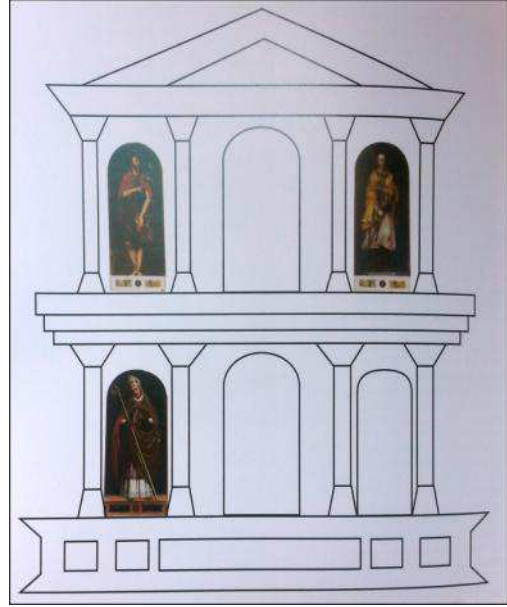
104.



105.



106.



107.





108.



109.



110.

