

# **Príloha**

## Obsah

Obr. 1: Frederic, Lord Leighton, <i>Electra at the Tomb of Agamemnon</i> , 1868, olej na plátne, 150 × 75,5 cm, súkromná zbierka.....	ix
Obr. 2: Frederic, Lord Leighton, <i>Lachrymae</i> , 1894-1895, olej na plátne, 56,8 × 47 cm, Metropolitan Museum of Art, New York.....	x
Obr. 3: Sir Lawrence Alma-Tadema, <i>The Last Roses</i> , 1872, olej na plátne, 46 × 38 cm, súkromná zbierka. ....	xi
Obr. 4: Sir Lawrence Alma-Tadema, <i>A Votive Offering</i> , 1873, olej na plátne, 47,3 × 39,4 cm, súkromná zbierka. ....	xii
Obr. 5: John William Waterhouse, <i>Gone, But Not Forgotten</i> , 1873, olej na plátne, 31,8 × 25,4 cm, súkromná zbierka. ....	xiii
Obr. 6: Simeon Solomon, <i>In the Temple of Venus</i> , 1863, olej na plátne, 25,4 × 17,7 cm, súkromná zbierka. ....	xiv
Obr. 7: Sir Lawrence Alma-Tadema, <i>Confidences, the Love Sentiment</i> , 1869, olej na plátne, 55,8 cm × 37,6 cm, súkromná zbierka.....	xv
Obr. 8: Sir Lawrence Alma-Tadema, <i>A Street Altar</i> , 1883, akvarel na papieri, 34,7 × 17,3 cm, Cecil Higgins Art Gallery, Bedford.....	xvi
Obr. 9: John William Godward, <i>An Offering to Venus</i> , 1912, olej na plátne, 77,5 × 38,7 cm, súkromná zbierka. ....	xvii
Obr. 10: John William Waterhouse, <i>The Household Gods</i> , 1880, olej na plátne, 102,6 × 74,3 cm, súkromná zbierka. ....	xviii
Obr. 11: John William Waterhouse, <i>Offerings</i> , 1879, olej na plátne, 23,5 × 13,3 cm, súkromná zbierka. ....	xix
Obr. 12: John William Waterhouse, <i>Flora</i> , 1891, olej na plátne, 73 × 33 cm, súkromná zbierka. ....	xx
Obr. 13: John William Waterhouse, <i>A Sick Child Brought into the Temple of Aesculapius</i> , 1877, olej na plátne, 170 × 208 cm, súkromná zbierka.....	xxi
Obr. 14: Sir Edward Poynter, <i>A Visit to Aesculapius</i> , 1880, olej na plátne, 151,1 × 228,6 cm, Tate, London. ....	xxii
Obr. 15: John William Godward, <i>A Flower Seller</i> , 1896, olej na plátne, neznáme rozmery, súkromná zbierka.....	xxiii
Obr. 16: John William Godward, <i>The Fruit Vendor</i> , 1917, olej na plátne, 50,8 × 100,3 cm, súkromná zbierka.....	xxiv
Obr. 17: Sir Lawrence Alma-Tadema, <i>The Armourer's Shop</i> , 1866, olej na plátne, neznáme rozmery, súkromná zbierka.....	xxv

- Obr. 18: Sir Lawrence Alma-Tadema, *Wine and Gossip*, 1869, olej na plátne, neznáme rozmery, súkromná zbierka..... xxvi
- Obr. 19: Sir Lawrence Alma-Tadema, *Sculptors in Ancient Rome*, 1877, olej na plátne, neznáme rozmery, súkromná zbierka. ....xxvii
- Obr. 20: John William Waterhouse, *A Flower Stall*, 1880, olej na plátne, 57,8 × 79,3 cm, Laing Art Gallery, Newcastle-upon-Tyne..... xxviii
- Obr. 21: John William Waterhouse, *A Flower Market, Old Rome*, 1886, olej na plátne, 155 × 88 cm, súkromná zbierka. .... xxix
- Obr. 22: Sir Lawrence Alma-Tadema, *The Flower Market*, 1868, olej na dreve, 42,1 × 58 cm, Manchester City Art Galleries.....xxx
- Obr. 23: John William Waterhouse, *After the Dance*, 1876, olej na plátne, 76,2 × 127 cm, súkromná zbierka. .... xxxi
- Obr. 24: Sir Lawrence Alma-Tadema, *After the Dance*, 1876, olej na plátne, 58,4 × 130 cm, neznáme umiestnenie. ....xxxii
- Obr. 25: John William Godward, *A Tambourine Girl*, 1906, olej na plátne, 114,5 × 76 cm, súkromná zbierka. .... xxxiii
- Obr. 26: Albert Moore, *The Dreamers*, 1882, olej na plátne, 70 × 121 cm, Birmingham Museums and Art Gallery. ....xxxiv
- Obr. 27: Albert Moore, *Jasmine*, 1880, olej na plátne, 66 × 50 cm, súkromná zbierka. .... xxxv
- Obr. 28: Frederic, Lord Leighton, *Flaming June*, 1895, olej na plátne, 120,6 × 120,6 cm. Museo de Arte de Ponce, Puerto Rico..... xxxvi
- Obr. 29: Frederic, Lord Leighton, *Summer Moon*, 1872, olej na plátne, súkromná zbierka. .... xxxvii
- Obr. 30: Sir Lawrence Alma-Tadema, *A Favourite Poet*, 1889, olej na dreve, 36,9 × 49,6 cm. Lady Lever Art Gallery, Liverpool. .... xxxviii
- Obr. 31: Sir Lawrence Alma-Tadema, *Silver Favourites*, 1903, olej na dreve, 69,1 × 42,2 cm. Manchester City Art Galleries..... xxxix
- Obr. 32: John William Godward, *Girl in Yellow Drapery*, 1901, olej na plátne, 30,5 × 61 cm, súkromná zbierka. ....xl
- Obr. 33: John William Godward, *The Tease*, 1901, olej na plátne, neznáme rozmery, súkromná zbierka. .... xli
- Obr. 34: John William Waterhouse, *Dolce Far Niente*, 1880, olej na plátne, 50 × 95,5 cm Kirkcaldy Museum and Art Gallery, Scotland..... xlii
- Obr. 35: John William Waterhouse, *Dolce Far Niente*, 1879, olej na plátne, 49,5 × 36,5 cm, Prudential Corporation Plc. ....xliii
- Obr. 36: John William Waterhouse, *Ariadne*, 1898, olej na plátne, 91 × 151 cm, súkromná zbierka. .... xliv
- Obr. 37: John William Waterhouse, *Listening to My Sweet Pipings*, 1911, olej na plátne, 57,8 × 102,2 cm, súkromná zbierka. .... xlv

- Obr. 38: John William Waterhouse, *Sweet Summer*, 1912, olej na plátne, 38,5 × 83,5 cm, súkromná zbierka. .... xlvi
- Obr. 39: John William Godward, *Sweet Nothings*, 1904, neznáme rozmery, olej na plátne, súkromná zbierka. ....xlvii
- Obr. 40: Frederic, Lord Leighton, *Idyll*, 1880-1881, olej na plátne, 104,1 × 212,1 cm, neznáme umiestnenie..... xlviii
- Obr. 41: Frederic, Lord Leighton, *Ariadne Abandoned by Theseus*, olej na plátne, 101 × 157 cm. Salar Jung Museum, Hyderabad, India. .... xlix
- Obr. 42: Evelyn Pickering (de Morgan), *Ariadne in Naxos*, 1877, olej na plátne, 60,3 × 99,7 cm, The De Morgan Foundation, London. .... l
- Obr. 43: George Frederic Watts, *Ariadne on the Island of Naxos*, 1875, olej na plátne, Guildhall Art Gallery, London.....li
- Obr. 44: Sir Edward Poynter, *Faithful unto Death*, 1865, olej na plátne, 115 × 75,5 cm, Walker Art Gallery, Liverpool. .... lii
- Obr. 45: Sir Edward Poynter, *The Catapult*, 1868, olej na plátne, 183,8 × 155,5 cm. Laing Art Gallery, New Castle. .... liii
- Obr. 46: Sir Lawrence Alma-Tadema, *Catullus at Lesbia's*, 1865, olej na dreve, 39,5 × 54,5 cm, súkromná zbierka. .... liv
- Obr. 47: Sir Lawrence Alma-Tadema, *Tibullus at Delia's*, 1866, olej na dreve, 43,9 × 66 cm, Museum of Fine Arts, Boston.....lv
- Obr. 48: Francois Jalabert, *Virgile, Horace et Varius chez Mecene*, 1844-1846, olej na plátne, 230 × 290 cm, Musee des Beaux-Arts, Nimes. .... lvi
- Obr. 49: Sir Lawrence Alma-Tadema, *A Roman Emperor AD 41*, 1872, olej na plátne, 83,8 × 174,2 cm, Walters Art Gallery, Baltimore. .... lvii
- Obr. 50: Sir Lawrence Alma-Tadema, *The Triumph of Titus: AD 71*, 1885, olej na dreve, 44,3 × 29,1 cm, Walters Art Gallery, Baltimore. ....lviii
- Obr. 51: John William Waterhouse, *The Remorse of Nero after the Murder of his Mother*, 1878, olej na plátne, 94 × 168 cm, súkromná zbierka..... lix
- Obr. 52: John William Waterhouse, *The Favourites of the Emperor Honorius*, 1883, olej na plátne, 119,3 × 205 cm, Art Gallery of South Australia, Adelaide. ....lx
- Obr. 53: John William Waterhouse, *The Favourites of the Emperor Honorius*, 1882-1883, skica, olej na plátne, 20 × 28 cm, zbierka Johna Physicka. .... lxi
- Obr. 54: John William Waterhouse, *The Favourites of the Emperor Honorius*, 1882-1883, skica, olej na plátne, 94 × 166,5 cm, zbierka Stephena a Lindy Waterhouse. .... lxii
- Obr. 55: Jean Paul Laurens, *Le Bas-Empire, Honorius*, 1880, olej na plátne, 153,7 × 108 cm, Chrysler Museum of Art, Norfolk.....lxiii
- Obr. 56: Jean-Léon Gerômé, *Diogenes*, 1860, olej na plátne, 74,5 × 101 cm, Walters Art Gallery, Baltimore..... lxiv

- Obr. 57: Jules Bastien-Lepage, *Diogenes*, 1873, olej na plátne, neznáme rozmery, Musée Marmottan Monet, Paris. .... lxxv
- Obr. 58: John William Waterhouse, *Diogenes*, 1882, olej na plátne, 208,3 × 134,6 cm, Art Gallery of New South Wales, Sydney..... lxxvi
- Obr. 59: John Everett Millais, *Esther*, 1865, olej na plátne, 105,5 × 75 cm, súkromná zbierka. .... lxxvii
- Obr. 60: Sir John Poynter, *Zenobia Captive*, 1878, olej na plátne, 71,2 × 53,4 cm, súkromná zbierka. .... lxxviii
- Obr. 61: Alexandre Cabanel, *Samson et Dalila*, 1878, olej na plátne, 92,7 × 64,8 cm, súkromná zbierka. .... lxxix
- Obr. 62: John William Waterhouse, *Mariamne*, 1887, olej na plátne, 259 × 180 cm, súkromná zbierka. .... lxxx
- Obr. 63: John William Waterhouse, *Consulting the Oracle*, 1884, olej na plátne, 119,4 × 198,1 cm, Tate, London..... lxxxi
- Obr. 64: John William Waterhouse, *Saint Eulalia*, 1885, olej na plátne, 188,6 × 117,5 cm, Tate, London. .... lxxxii
- Obr. 65: Gustave Moreau, *Les Sirènes*, 1875-1880?, olej na plátne, 89 × 118 cm, Musée Gustave Moreau, Paris. .... lxxxiii
- Obr. 66: Léon Auguste Adolphe Belly, *Les Sirènes*, 1867, olej na plátne, 363 × 300 cm, Musée de l'Hôtel Sandelin, Saint-Omer..... lxxxiv
- Obr. 67: Herbert James Draper, *Ulysses and the Sirens*, 1909, olej na plátne, 213 × 177 cm, Ferens Art Gallery, Hull. .... lxxxv
- Obr. 68: Otto Geiner, *Odyseus und die Sirenen*, 1902, olej na plátne, 60,5 × 121 cm, Museum der bildenden Künste, Leipzig..... lxxxvi
- Obr. 69: Sir Edward Burne-Jones, *The Sirens*, 1891-1898, olej na plátne, neznáme rozmery, Ringling Museum of Art, Florida. .... lxxxvii
- Obr. 70: Sir Edward Poynter, *The Cave of the Storm Nymphs*, 1903, olej na plátne, 148 × 112 cm, súkromná zbierka. .... lxxxviii
- Obr. 71: John William Whiteley, *A Sail!*, 1898, olej na plátne, neznáme rozmery, neznáme umiestnenie..... lxxxix
- Obr. 72: John William Waterhouse, *Ulysses and the Sirens*, 1891, olej na plátne, 99 × 201 cm, National Gallery of Victoria, Australia. .... lxxx
- Obr. 73: Dante Gabriel Rosseti, *Ligeia Siren*, 1873, krieda, 78,7 × 47 cm, súkromná zbierka. .... lxxxix
- Obr. 74: Sir Edward Poynter, *The Siren*, 1864, olej na plátne, neznáme rozmery, súkromná zbierka. .... lxxxii
- Obr. 75: Luis Loeb, *The Siren*, 1904, olej na plátne, 88,5 × 73,4 cm, Smithsonian American Art Museum and Renwick Gallery, Washington..... lxxxiii
- Obr. 76: J. Humphreys Johnston, 1898, olej na plátne, rozmery a umiestnenie neznáme..... lxxxiv

- Obr. 77: Gustave Moreau, *Le Poète et la Sirène*, 1894, olej na plátne, 158 × 115 cm, Musée Gustave Moreau, Paríž. ....lxxxv
- Obr. 78: Sir Edward Burne-Jones, *The Depths of the Sea*, 1887, olej na plátne, neznáme rozmery, súkromná zbierka..... lxxxvi
- Obr. 79: Aristide Sartorio, *The Green Abyss*, 1895, olej na plátne, neznáme rozmery, súkromná zbierka..... lxxxvii
- Obr. 80: Charles Dana Gibson, *In The Swim*, 1900, kresba, rozmery a umiestnenie neznáme.....lxxxviii
- Obr. 81: John William Waterhouse, *The Siren*, 1900, olej na plátne, 81 × 53 cm, súkromná zbierka. ....lxxxix
- Obr. 82: Pierre-Auguste Renoir, *The Naiad*, 1876, olej na plátne, 27 × 22 cm, Galerie Daniel Malingue, Paríž. .... xc
- Obr. 83: Henri Fantin-Latour, *Naiad*, 1896, olej na plátne, 41,5 × 55 cm, Ermitáž, Petrohrad. ....xcii
- Obr. 84: Henry James Draper, *Naiad's Pool*, neznámy dátum vzniku, olej na plátne, neznáme rozmery, súkromná zbierka..... xcii
- Obr. 85: John William Waterhouse, *A Naiad*, 1893, olej na plátne, 66 × 127 cm, zbierka Sira Tima Ricea. .... xciii
- Obr. 86: Édouard Théophile Blanchard, *Hylas entraîné par les nymphes*, 1874, olej na plátne, neznáme rozmery, Musée des Beaux-Arts, Caen. .... xciv
- Obr. 87: Henrietta Rae, *Hylas and the Water Nymphs*, 1910, olej na plátne, 142,3 × 222,8 cm, súkromná zbierka.....xcv
- Obr. 88: John William Waterhouse, *Hylas and the Water Nymphs*, 1896, olej na plátne, 98,2 × 163,3 cm, Manchester City Galleries..... xcvi
- Obr. 89: Gustave Moreau, *Orphée*, 1865, olej na dreve, 154 × 99,5 cm, Musée d'Orsay, Paríž..... xcvii
- Obr. 90: Odilon Redon, *Orphée*, 1903-1910, pastel na papieri, 68,8 × 56,8 cm, The Cleveland Museum of Art, Ohio. ....xcviii
- Obr. 91: Jean Delville, *Orphée*, 1893, olej na plátne, 79,3 × 99,2 cm, Musées royaux des beaux-arts de Belgique, Brusel..... xcix
- Obr. 92: John William Waterhouse, *Nymphs Finding the Head of Orpheus*, 1900, olej na plátne, 149 × 99 cm, zbierka Sira Tima Ricea..... c
- Obr. 93: John William Waterhouse, *The Charmer*, 1911, olej na plátne, 97 × 61 cm, súkromná zbierka. .... ci
- Obr. 94: Sir Edward Burne-Jones, *The Wedding of Psyche*, 1895, olej na plátne, neznáme rozmery, Musées Royaux des Beaux-Arts de Belgique, Brusel. ....cii
- Obr. 95: Sir Edward Burne-Jones, *Pan and Psyche*, 1872-1874, olej na plátne, 65,1 × 53,3 cm, Fogg Art Museum, Harvard University Art Museums..... ciii
- Obr. 96: Sir Edward Burne-Jones, *Cupid Delivering Psyche*, 1871, olej na plátne, neznáme rozmery, Sheffield Art Gallery, Sheffield.....civ

- Obr. 97: Sir Edward Burne-Jones, *Psyche sent by Venus with a casket to Proserpine, passes safely through the Shadowy Meads, disregarding the call for help from the Shadowy Men trying to load an ass, and the three old women weaving, who are set to ensnare her*, 1872-1881, olej na plátne, 119,5 × 124,5 cm, Birmingham Museums and Art Gallery. .... cv
- Obr. 98: Sir Edward Burne-Jones, *Psyche giving the coin to the Ferryman of the Styx: The Dead Man in the form of Psyche's father rising from the water as Psyche is ferried across to Hades*, 1872-1881, olej na plátne, 119,5 × 266,7 cm. Birmingham Museums and Art Gallery. ....cvi
- Obr. 99: J. R. Spencer-Stanhope, *Charon and Psyche*, 1883, olej na plátne, 95,2 × 132,4 cm, súkromná zbierka. .... cvii
- Obr. 100: J. R. Spencer-Stanhope, *Cupid and Psyche*, olej na plátne, neznáme rozmery, neznáme umiestnenie. .... cviii
- Obr. 101: J. R. Spencer-Stanhope, *Labours of Psyche*, 1873, tempera na 4 paneloch spoločne rámovaných, neznáme rozmery, súkromná zbierka. ....cix
- Obr. 102: Sir Edward Poynter, *Psyche in the Temple of Love*, 1882, olej na plátne, 66,3 × 50,7 cm, Walker Art Gallery, Liverpool. .... cx
- Obr. 103: Sir Edward Poynter, *Psyche*, 1884, akvarel, 75 × 55 cm, súkromná zbierka. ....cxi
- Obr. 104: Frederic Leighton, *Bath of Psyche*, 1890, olej na plátne, 189,2 × 66,2 cm, Tate, Londýn. .... cxii
- Obr. 105: John William Waterhouse, *Psyche Opening the Door into Cupid's Garden*, 1903, olej na plátne, 109,5 × 72 cm, Harris Museum and Art Gallery, Preston. .... cxiii
- Obr. 106: John William Waterhouse, *Psyche Opening the Golden Box*, 1903, olej na plátne, 117 × 74 cm, súkromná zbierka. .... cxiv
- Obr. 107: J. R. Spencer-Stanhope, *Penelope*, 1849, olej na plátne, 60 × 44,7 cm, neznáme umiestnenie. .... cxv
- Obr. 108: Dante Gabriel Rossetti, *Penelope*, 1869, krieda na papieri, 89 × 67 cm, súkromná zbierka. .... cxvi
- Obr. 109: A. Frederick Sandys, *Penelope*, 1879, olej na plátne, neznáme rozmery, neznáme umiestnenie. .... cxvii
- Obr. 110: Dora Wheeler, *Penelope Unraveling Her Work at Night*, 1886, hodváb vyšitý hodvábnou niťou, 114,3 × 172,7 cm, The Metropolitan Museum of Art, New York. ....cxviii
- Obr. 111: John William Waterhouse, *Penelope and the Suitors*, 1912, olej na plátne, 129,8 × 188 cm, Aberdeen Art Gallery and Museums, Aberdeen, Veľká Británia. .... cxix
- Obr. 112: Bernardino Pintoricchio, *Penelope with the Suitors*, 1509, freska, 125,5 × 152 cm, The National Gallery, Londýn. .... cxx
- Obr. 113: A. Frederick Sandys, *Medea*, 1866-1868, olej na plátne, 61,2 × 45,6 cm, Birmingham Museum and Art Gallery, Birmingham. .... cxxi

- Obr. 114: Evelyn de Morgan, *Medea*, 1889, olej na plátne, neznáme rozmery, Williamson Art Gallery, Birkenhead, Veľká Británia. .... cxxii
- Obr. 115: Herbert James Draper, *The Golden Fleece*, 1904, olej na plátne, 155 × 272,5 cm, Bradford Museums and Galleries, Bradford. ....cxxiii
- Obr. 116: John William Waterhouse, *Jason and Medea*, 1907, olej na plátne, 134 × 107 cm, súkromná zbierka. .... cxxiv
- Obr. 117: John William Waterhouse, štúdie k *Jason and Medea*, 1906-1907, kresba na papieri, 17,6 × 24,7 cm, Victoria and Albert Museum, Londýn..... cxxv
- Obr. 118: Benjamin West, *Narcissus and Echo*, 1805, olej na plátne, 60,9 × 91,4 cm, súkromná zbierka. .... cxxvi
- Obr. 119: Solomon J. Solomon, *Echo and Narcissus*, 1895, olej na plátne, neznáme rozmery, neznáme umiestnenie.....cxxvii
- Obr. 120: Alexandre Cabanel, *Echo*, 1874, olej na plátne, 99,8 × 66,7 cm, The Metropolitan Museum of Art, New York..... cxxviii
- Obr. 121: Guyla Benczur, *Narcissus*, 1881, olej na plátne, 115 × 110,5 cm, Magyar Nemzeti Galéria, Budapešť. .... cxxix
- Obr. 122: John William Waterhouse, *Echo and Narcissus*, 1903, olej na plátne, 109,2 × 189,2 cm, Walker Art Gallery, Liverpool. .... cxxx
- Obr. 123: Francois Alfred Delobbe, *Pyramus and Thisbe*, 1878, grafika podľa originálnej olejomalby, neznáme rozmery, neznáme umiestnenie..... cxxxi
- Obr. 124: Edwin Long, *Thisbe*, 1875, rytina, veľkosť neznáma, neznáme umiestnenie.....cxxxii
- Obr. 125: John William Waterhouse, *Thisbe*, 1909, olej na plátne, 97 × 59 cm, súkromná zbierka. .... cxxxiii
- Obr. 126: Sir Edward Burne-Jones, *Phyllis and Demophoon*, 1870, olej na plátne, 190,5 × 106,7 cm, Birmingham Museums and Art Gallery, Birmingham. ....cxxxiv
- Obr. 127: Sir Edward Burne-Jones, *The Tree of Forgiveness*, 1882, olej na plátne, 191 × 107 cm, Lady Lever Art Gallery, Port Sunlight. .... cxxxv
- Obr. 128: John William Waterhouse, *Phyllis and Demophoon*, 1906, olej na plátne, 135 × 90 cm, umiestnenie neznáme..... cxxxvi





**Obr. 1: Frederic, Lord Leighton, *Electra at the Tomb of Agamemnon*, 1868, olej na plátne, 150 × 75,5 cm, súkromná zbierka.**

Zdroj: [http://en.wikipedia.org/wiki/File:1869\\_Frederic\\_Leighton\\_-\\_Electra\\_at\\_the\\_Tomb\\_of\\_Agamemnon.jpg](http://en.wikipedia.org/wiki/File:1869_Frederic_Leighton_-_Electra_at_the_Tomb_of_Agamemnon.jpg)



**Obr. 2: Frederic, Lord Leighton, *Lachrymae*, 1894-1895, olej na plátne, 56,8 × 47 cm, Metropolitan Museum of Art, New York.**

Zdroj: <http://www.metmuseum.org/toah/works-of-art/96.28>



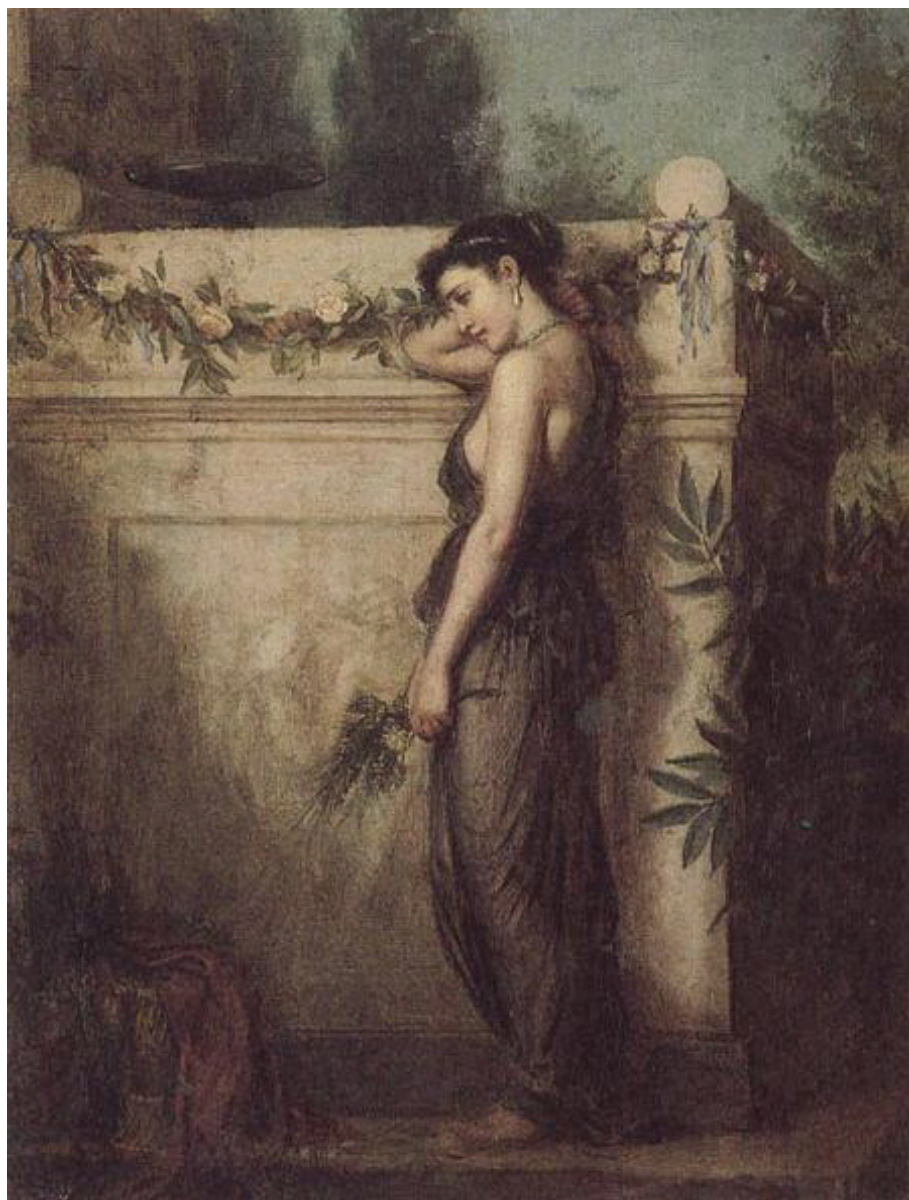
**Obr. 3: Sir Lawrence Alma-Tadema, *The Last Roses*, 1872, olej na plátne, 46 × 38 cm, súkromná zbierka.**

Zdroj: <http://www.wikipaintings.org/en/sir-lawrence-alma-tadema/the-last-roses-1872>



**Obr. 4: Sir Lawrence Alma-Tadema, *A Votive Offering*, 1873, olej na plátne, 47,3 × 39,4 cm, súkromná zbierka.**

Zdroj: <http://www.canvaz.com/gallery/2581.htm>



**Obr. 5: John William Waterhouse, *Gone, But Not Forgotten*, 1873, olej na plátne, 31,8 × 25,4 cm, súkromná zbierka.**

Zdroj: <http://www.johnwilliamwaterhouse.com/pictures/gone-but-not-forgotten-1873/>



**Obr. 6: Simeon Solomon, *In the Temple of Venus*, 1863, olej na plátne, 25,4 × 17,7 cm, súkromná zbierka.**

Zdroj: <http://preraphaelitepaintings.blogspot.cz/2011/01/simeon-solomon-in-temple-of-venus-1863.html>



**Obr. 7: Sir Lawrence Alma-Tadema, *Confidences, the Love Sentiment*, 1869, olej na plátne, 55,8 cm × 37,6 cm, súkromná zbierka.**

Zdroj: <http://www.wikipaintings.org/en/sir-lawrence-alma-tadema/confidences-1869>



**Obr. 8: Sir Lawrence Alma-Tadema, *A Street Altar*, 1883, akvarel na papieri, 34,7 × 17,3 cm, Cecil Higgins Art Gallery, Bedford.**

Zdroj: <http://www.wikipaintings.org/en/sir-lawrence-alma-tadema/a-street-altar-1883>





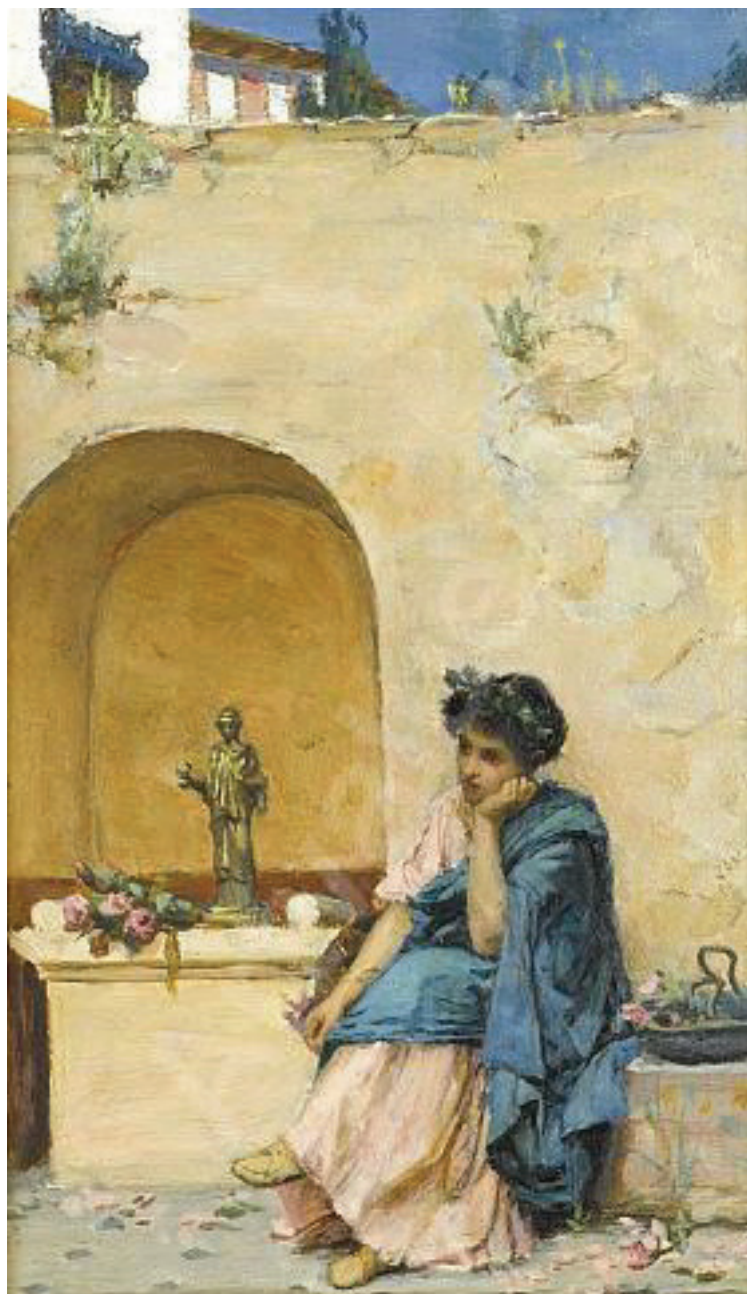
**Obr. 9: John William Godward, *An Offering to Venus*, 1912, olej na plátne, 77,5 × 38,7 cm, súkromná zbierka.**

Zdroj: [http://commons.wikimedia.org/wiki/File%3AGodward-An\\_Offering\\_to\\_Venus-1912.jpg](http://commons.wikimedia.org/wiki/File%3AGodward-An_Offering_to_Venus-1912.jpg)



**Obr. 10: John William Waterhouse, *The Household Gods*, 1880, olej na plátne, 102,6 × 74,3 cm, súkromná zbierka.**

Zdroj: <http://www.jwwaterhouse.com/view.cfm?recordid=10>



**Obr. 11: John William Waterhouse, *Offerings*, 1879, olej na plátne, 23,5 × 13,3 cm, súkromná zbierka.**

Zdroj: <http://johnwilliamwaterhouse.com/pictures/offerings-1879/>



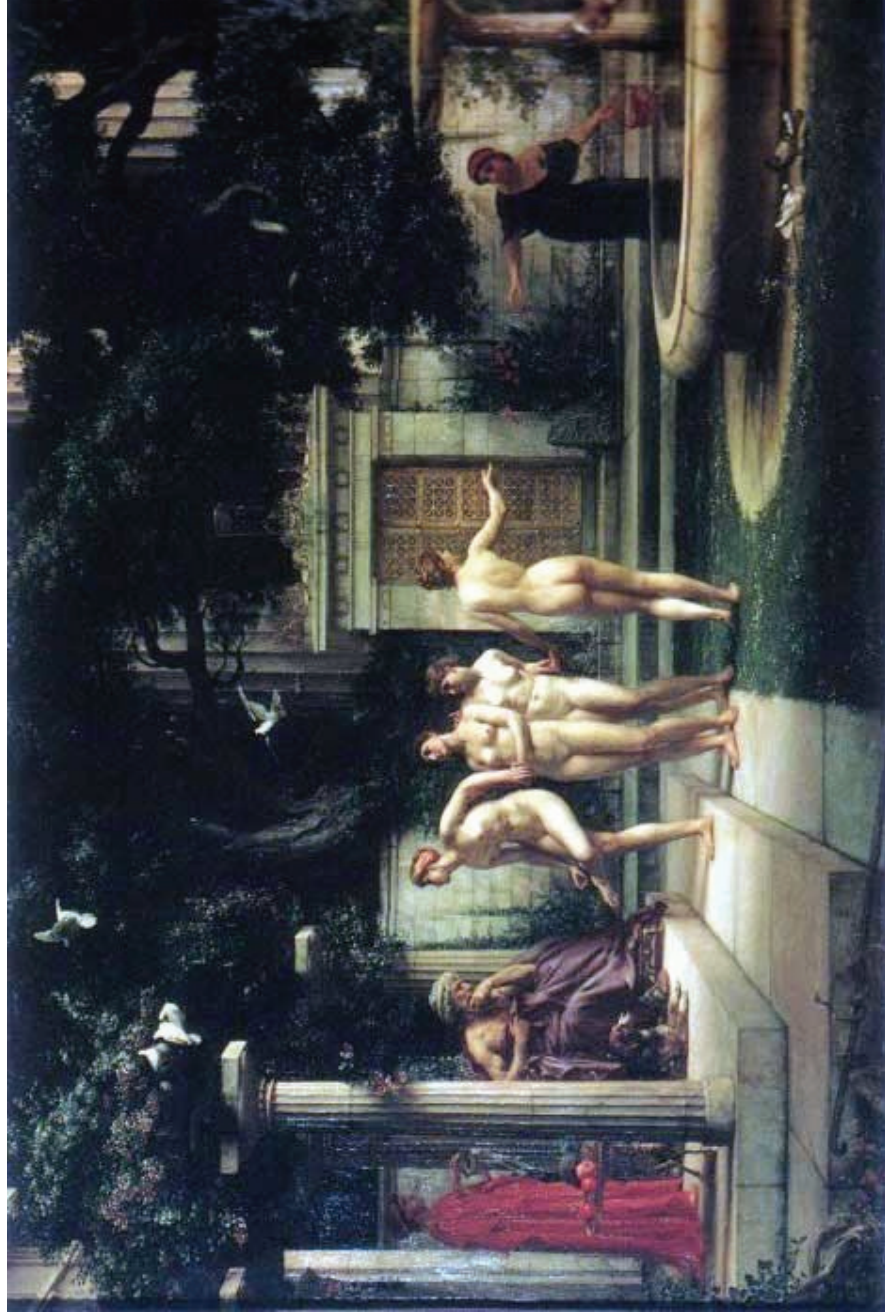
**Obr. 12: John William Waterhouse, *Flora*, 1891, olej na plátne, 73 × 33 cm, súkromná zbierka.**

Zdroj: <http://johnwilliamwaterhouse.com/pictures/flora-1891/>



**Obr. 13: John William Waterhouse, *A Sick Child Brought into the Temple of Aesculapius*, 1877, olej na plátne, 170 × 208 cm, súkromná zbierka.**

Zdroj: <http://www.wikipaintings.org/en/john-william-waterhouse/the-visit-of-a-sick-child-to-the-temple-of-aesculapius-1877>



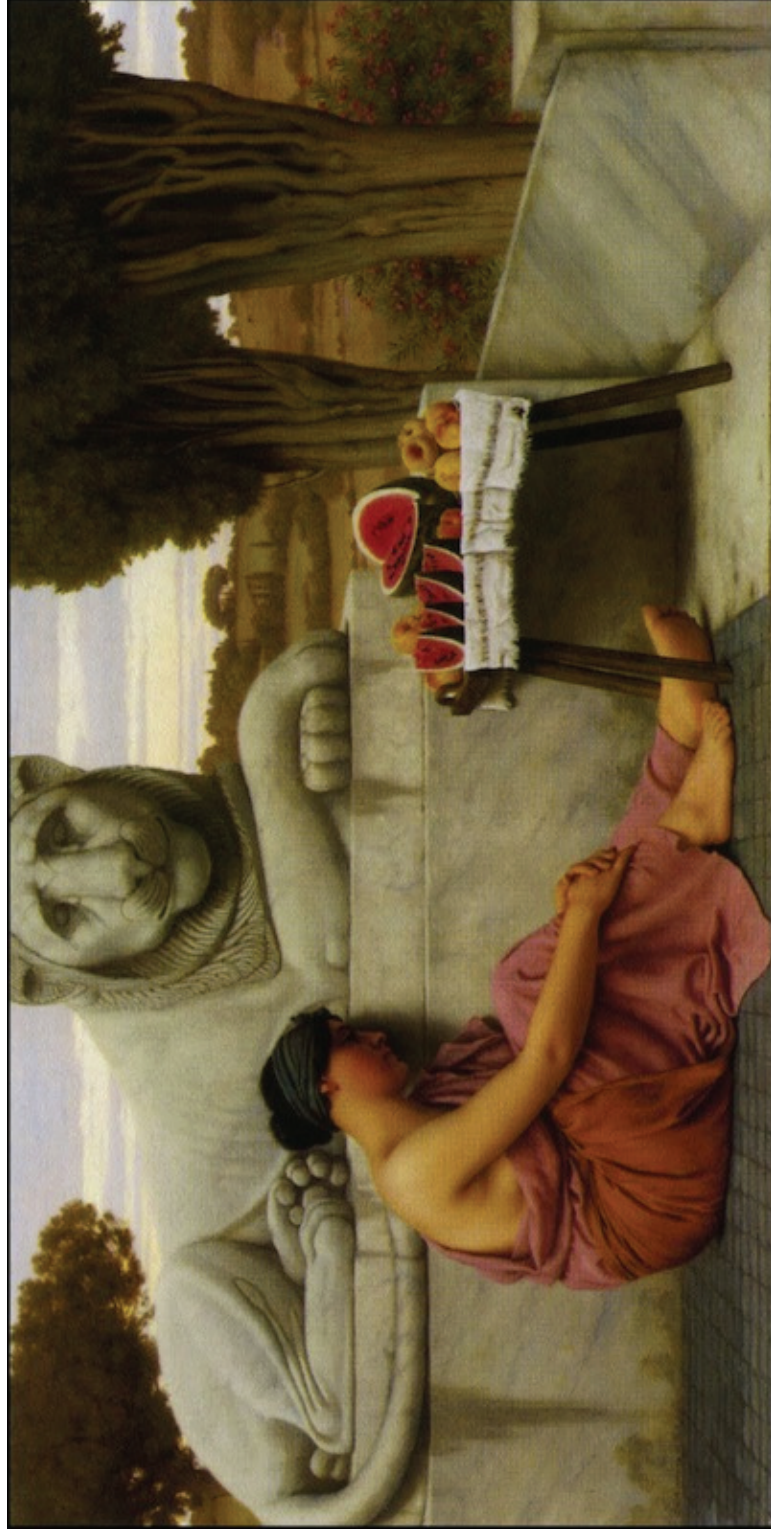
**Obr. 14: Sir Edward Poynter, *A Visit to Aesculapius*, 1880, olej na plátne, 151,1 × 228,6 cm, Tate, London.**

Zdroj: <http://www.tate.org.uk/art/artworks/poynter-a-visit-to-aesculapius-n01586>



**Obr. 15: John William Godward, *A Flower Seller*, 1896, olej na plátne, neznáme rozmery, súkromná zbierka.**

Zdroj: <http://www.1st-art-gallery.com/John-William-Godward/A-Flower-Seller.html>



Obr. 16: John William Godward, *The Fruit Vendor*, 1917, olej na plátne, 50,8 × 100,3 cm, súkromná zbierka.

Zdroj: [http://commons.wikimedia.org/wiki/File:Godward-The\\_Fruit\\_Vendor-1917.jpg](http://commons.wikimedia.org/wiki/File:Godward-The_Fruit_Vendor-1917.jpg)





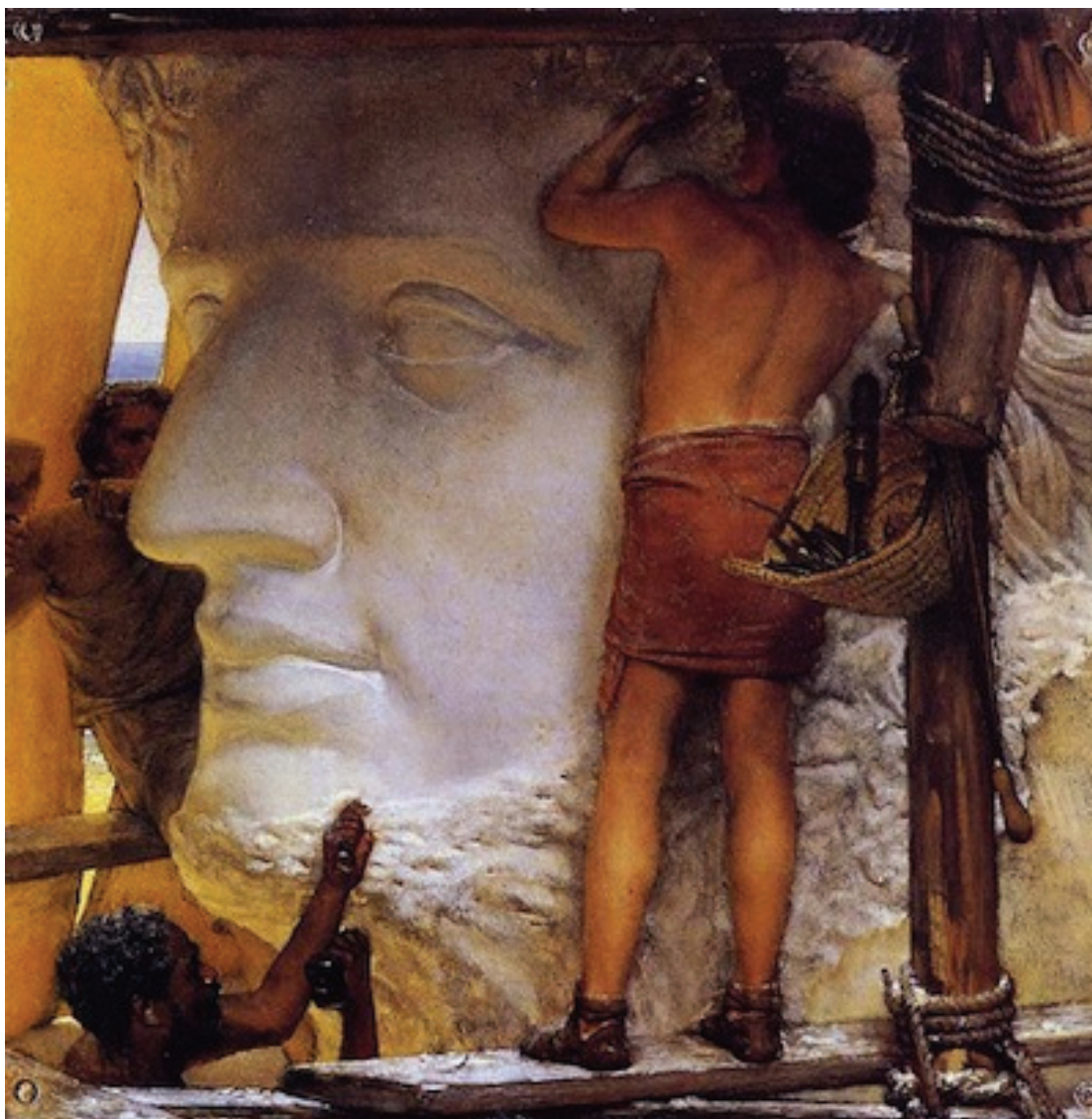
Obr. 17: Sir Lawrence Alma-Tadema, *The Armourer's Shop*, 1866, olej na plátne, neznáme rozmery, súkromná zbierka.

Zdroj: <http://www.superstock.com/stock-photos-images/1661-250>



**Obr. 18: Sir Lawrence Alma-Tadema, *Wine and Gossip*, 1869, olej na plátne, neznáme rozmery, súkromná zbierka.**

Zdroj: <http://www.myartprints.cz/a/alma-tadema-sir-lawrence/the-wine-shop.html>



**Obr. 19: Sir Lawrence Alma-Tadema, *Sculptors in Ancient Rome*, 1877, olej na plátne, neznáme rozmery, súkromná zbierka.**

Zdroj: <http://www.wikipaintings.org/en/sir-lawrence-alma-tadema/sculptors-in-ancient-rome-1877>



**Obr. 20: John William Waterhouse, *A Flower Stall*, 1880, olej na plátne, 57,8 × 79,3 cm, Laing Art Gallery, Newcastle-upon-Tyne.**

Zdroj: <http://www.johnwilliamwaterhouse.com/pictures/flower-stall-1880/>



**Obr. 21: John William Waterhouse, *A Flower Market, Old Rome*, 1886, olej na plátne, 155 × 88 cm, súkromná zbierka.**

Zdroj: <http://www.johnwilliamwaterhouse.com/pictures/flower-market-old-rome-1886/?r=%2fpictures%2fsearch%2f%3fd%3d188>



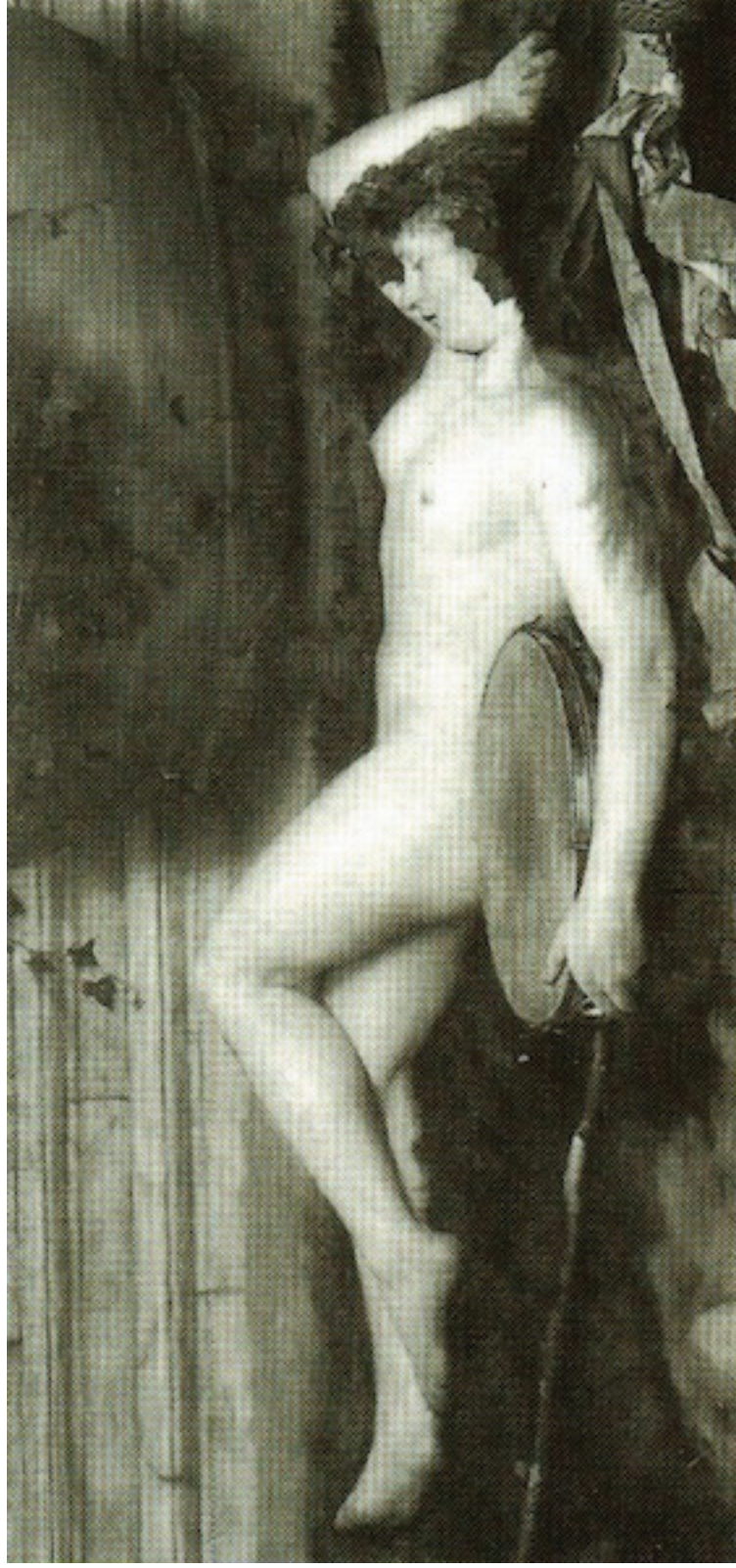
**Obr. 22: Sir Lawrence Alma-Tadema, *The Flower Market*, 1868, olej na dreve, 42,1 × 58 cm, Manchester City Art Galleries.**

Zdroj: <http://www.wikipaintings.org/en/sir-lawrence-alma-tadema/the-flower-market-1868>



**Obr. 23: John William Waterhouse, *After the Dance*, 1876, olej na plátne, 76,2 × 127 cm, súkromná zbierka.**

Zdroj: <http://www.wikipaintings.org/en/john-william-waterhouse/after-the-dance-1876>



**Obr. 24: Sir Lawrence Alma-Tadema, *After the Dance*, 1876, olej na plátne, 58,4 × 130 cm, neznáme umiestnenie.**

Zdroj: Prettejohn, E. et al. (Ed.) 2008: J. W. Waterhouse: The Modern Pre-Raphaelite (exh. cat.). London, 72.





**Obr. 25: John William Godward, *A Tambourine Girl*, 1906, olej na plátne, 114,5 × 76 cm, súkromná zbierka.**

Zdroj: [http://en.wikipedia.org/wiki/File:Godward-The\\_Tambourine\\_Girl-1906.jpg](http://en.wikipedia.org/wiki/File:Godward-The_Tambourine_Girl-1906.jpg)



Obr. 26: Albert Moore, *The Dreamers*, 1882, olej na plátne, 70 × 121 cm, Birmingham Museums and Art Gallery.

Zdroj: <http://www.victorianweb.org/painting/moore/paintings/king.html>



**Obr. 27:** Albert Moore, *Jasmine*, 1880, olej na plátne, 66 × 50 cm, súkromná zbierka.

Zdroj: [http://nl.wikipedia.org/wiki/Bestand:Moore\\_jasmine.jpg](http://nl.wikipedia.org/wiki/Bestand:Moore_jasmine.jpg)



**Obr. 28: Frederic, Lord Leighton, *Flaming June*, 1895, olej na plátne, 120,6 × 120,6 cm. Museo de Arte de Ponce, Puerto Rico.**

Zdroj: [http://en.wikipedia.org/wiki/File:Flaming\\_June,\\_by\\_Fredrick\\_Lord\\_Leighton\\_\(1830-1896\).jpg](http://en.wikipedia.org/wiki/File:Flaming_June,_by_Fredrick_Lord_Leighton_(1830-1896).jpg)



**Obr. 29: Frederic, Lord Leighton, *Summer Moon*, 1872, olej na plátne, súkromná zbierka.**

Zdroj: <http://www.wfu.edu/~woodaljn/ant260/summermoon.htm>



**Obr. 30: Sir Lawrence Alma-Tadema, *A Favourite Poet*, 1889, olej na dreve, 36,9 × 49,6 cm. Lady Lever Art Gallery, Liverpool.**

Zdroj: <http://www.cgfaonlineartmuseum.com/alma/p-alma9.htm>



**Obr. 31: Sir Lawrence Alma-Tadema, *Silver Favourites*, 1903, olej na dreve, 69,1 × 42,2 cm. Manchester City Art Galleries.**

Zdroj: [http://en.wikipedia.org/wiki/File:Alma\\_Tadema\\_Silver\\_Favourites.jpg](http://en.wikipedia.org/wiki/File:Alma_Tadema_Silver_Favourites.jpg)



**Obr. 32: John William Godward, *Girl in Yellow Drapery*, 1901, olej na plátne, 30,5 × 61 cm, súkromná zbierka.**

Zdroj: <http://art-painting-gallery.com/BigPic.asp?id=601>





Obr. 33: John William Godward, *The Tease*, 1901, olej na plátne, neznáme rozmery, súkromná zbierka.

Zdroj: <http://www.johnwilliamgodward.org/The-Tease-1901.html>



**Obr. 34: John William Waterhouse, *Dolce Far Niente*, 1880, olej na plátne, 50 × 95,5 cm Kirkcaldy Museum and Art Gallery, Scotland.**

Zdroj: [http://it.wikipedia.org/wiki/File:Dolce\\_far\\_Niente\\_-\\_John\\_William\\_Waterhouse.jpg](http://it.wikipedia.org/wiki/File:Dolce_far_Niente_-_John_William_Waterhouse.jpg)



Obr. 35: John William Waterhouse, *Dolce Far Niente*, 1879, olej na plátne, 49,5 × 36,5 cm, Prudential Corporation Plc.

Zdroj: <http://johnwilliamwaterhouse.com/pictures/dolce-far-niente-1879/?r=%2fpictures%2fsearch%2f%3fk%3ddolce>



**Obr. 36: John William Waterhouse, *Ariadne*, 1898, olej na plátne, 91 × 151 cm, súkromná zbierka.**

Zdroj: <http://www.jwwaterhouse.com/view.cfm?recordid=74>



Obr. 37: John William Waterhouse, *Listening to My Sweet Pipings*, 1911, olej na plátne, 57,8 × 102,2 cm, súkromná zbierka.

Zdroj: <http://www.wikipaintings.org/en/john-william-waterhouse/listen-to-my-sweet-pipings-1911>



Obr. 38: John William Waterhouse, *Sweet Summer*, 1912, olej na plátne, 38,5 × 83,5 cm, súkromná zbierka.

Zdroj: <http://www.wikipaintings.org/en/john-william-waterhouse/sweet-summer-1912>



Obr. 39: John William Godward, *Sweet Nothings*, 1904, neznáme rozmery, olej na plátne, súkromná zbierka.

Zdroj: [http://en.wikipedia.org/wiki/File:Sweet\\_Nothings\\_by\\_Godward.jpg](http://en.wikipedia.org/wiki/File:Sweet_Nothings_by_Godward.jpg)



**Obr. 40: Frederic, Lord Leighton, *Idyll*, 1880-1881, olej na plátne, 104,1 × 212,1 cm, neznáme umiestnenie.**

Zdroj: [http://en.wikipedia.org/wiki/File:Leighton,\\_Frederic\\_-\\_Idyll\\_-\\_c.\\_1880-81.jpg](http://en.wikipedia.org/wiki/File:Leighton,_Frederic_-_Idyll_-_c._1880-81.jpg)





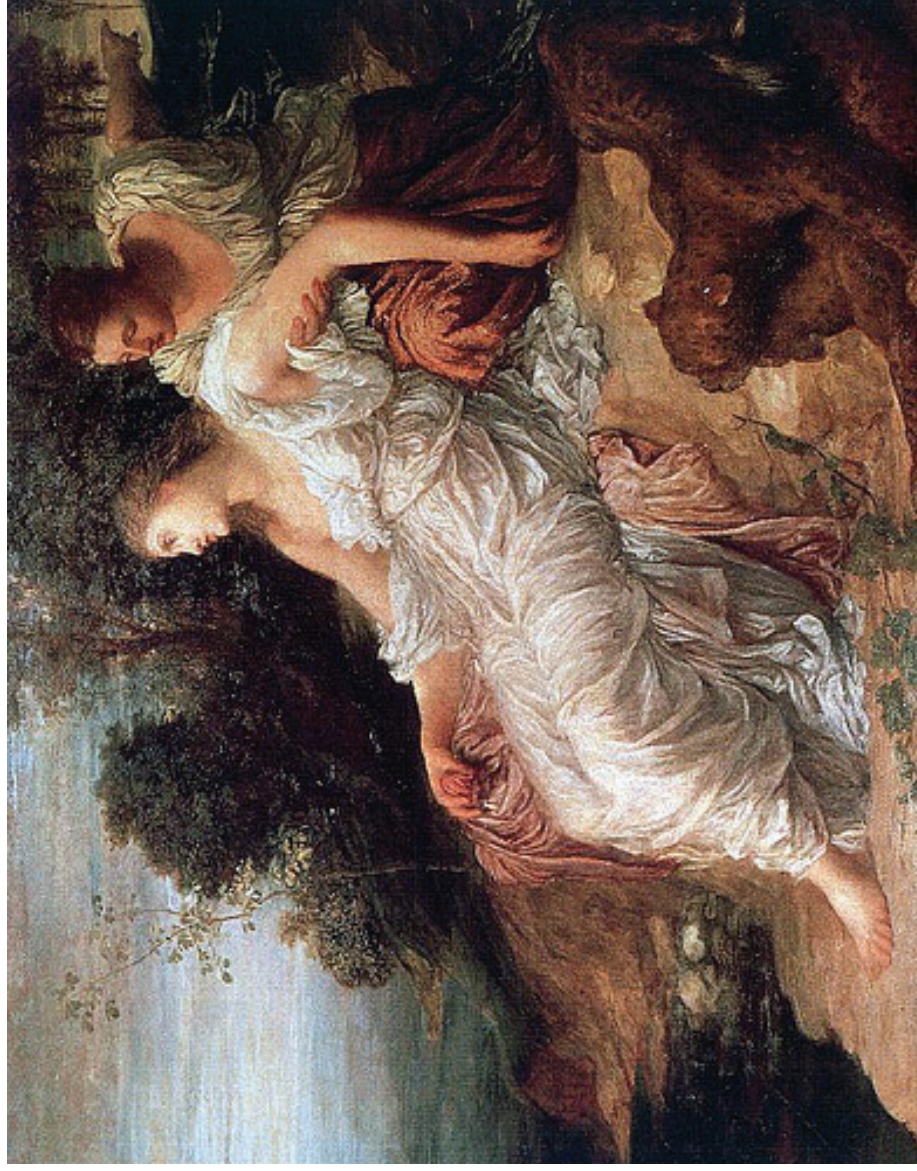
**Obr. 41: Frederic, Lord Leighton, *Ariadne Abandoned by Theseus*, olej na plátne, 101 × 157 cm. Salar Jung Museum, Hyderabad, India.**

Zdroj: <http://www.tumblr.com/tagged/ariadne-abandoned>



**Obr. 42: Evelyn Pickering (de Morgan), *Ariadne in Naxos*, 1877, olej na plátne, 60,3 × 99,7 cm, The De Morgan Foundation, London.**

Zdroj: [http://www.wikigallery.org/wiki/painting\\_251877/Evelyn-Pickering-De-Morgan/Ariadne-in-Naxos-1877](http://www.wikigallery.org/wiki/painting_251877/Evelyn-Pickering-De-Morgan/Ariadne-in-Naxos-1877)



**Obr. 43: George Frederic Watts, *Ariadne on the Island of Naxos*, 1875, olej na plátne, Guildhall Art Gallery, London.**

Zdroj: <http://www.wikipaintings.org/en/george-frederick-watts/ariadne-on-the-island-of-naxos-1875>



**Obr. 44: Sir Edward Poynter, *Faithful unto Death*, 1865, olej na plátne, 115 ×75,5 cm, Walker Art Gallery, Liverpool.**

Zdroj: <http://www.victorianweb.org/painting/poynter/paintings/7.html>



Obr. 45: Sir Edward Poynter, *The Catapult*, 1868, olej na plátne, 183,8 × 155,5 cm. Laing Art Gallery, New Castle.

Zdroj: [http://en.wikipedia.org/wiki/File:Catapulta\\_by\\_Edward\\_Poynter.jpg](http://en.wikipedia.org/wiki/File:Catapulta_by_Edward_Poynter.jpg)



**Obr. 46:** Sir Lawrence Alma-Tadema, *Catullus at Lesbia's*, 1865, olej na dreve, 39,5 × 54,5 cm, súkromná zbierka.

Zdroj: <http://www.alma-tadema.org/Catullus-at-Lesbia's.html>



**Obr. 47: Sir Lawrence Alma-Tadema, *Tibullus at Delia's*, 1866, olej na dreve, 43,9 × 66 cm, Museum of Fine Arts, Boston.**

Zdroj: <http://en.wikipedia.org/wiki/File:Tibullus.jpg>



Obr. 48: François-Jacques Chalabert, *Virgile, Horace et Varius chez Mecene*, 1844-1846, olej na plátne, 230 × 290 cm, Musée des Beaux-Arts, Nîmes.

Zdroj: <http://100artistsbook.tumblr.com/post/13871755606/myth-mythology-male-man-art-illustration-painting-drawing>





**Obr. 49: Sir Lawrence Alma-Tadema, *A Roman Emperor AD 41*, 1872, olej na plátne, 83,8 × 174,2 cm, Walters Art Gallery, Baltimore.**

Zdroj: <http://siksitesites.uoi.com.br/AlmaTadema3.htm>



**Obr. 50: Sir Lawrence Alma-Tadema, *The Triumph of Titus: AD 71*, 1885, olej na dreve, 44,3 × 29,1 cm, Walters Art Gallery, Baltimore.**

Zdroj: [http://en.wikipedia.org/wiki/File:The\\_Triumph\\_of\\_Titus\\_Alma\\_Tadema.jpg](http://en.wikipedia.org/wiki/File:The_Triumph_of_Titus_Alma_Tadema.jpg)



**Obr. 51: John William Waterhouse, *The Remorse of Nero after the Murder of his Mother*, 1878, olej na plátne, 94 × 168 cm, súkromná zbierka.**

Zdroj: <http://www.jwwaterhouse.com/view.cfm?recordid=1>



Obr. 52: John William Waterhouse, *The Favourites of the Emperor Honorius*, 1883, olej na plátne, 119,3 × 205 cm, Art Gallery of South Australia, Adelaide.

Zdroj: [http://en.wikipedia.org/wiki/File:John\\_William\\_Waterhouse\\_-\\_The\\_Favorites\\_of\\_the\\_Emperor\\_Honorius\\_-\\_1883.jpg](http://en.wikipedia.org/wiki/File:John_William_Waterhouse_-_The_Favorites_of_the_Emperor_Honorius_-_1883.jpg)



**Obr. 53: John William Waterhouse, *The Favourites of the Emperor Honorius*, 1882-1883, skica, olej na plátne, 20 × 28 cm, zbierka Johna Physicka.**

Zdroj: <http://www.johnwilliamwaterhouse.com/pictures/favourites-emperor-honorius-study-2/>



Obr. 54: John William Waterhouse, *The Favourites of the Emperor Honorius*, 1882-1883, skica, olej na plátne, 94 × 166,5 cm, zbierka Stephena a Lindy Waterhouse.

Zdroj: <http://www.flickr.com/photos/harlear2010/5243143794/>



**Obr. 55: Jean Paul Laurens, *Le Bas-Empire, Honorius*, 1880, olej na plátne, 153,7 × 108 cm, Chrysler Museum of Art, Norfolk.**

Zdroj: [http://en.wikipedia.org/wiki/File:Jean-Paul\\_Laurens\\_-\\_The\\_Byzantine\\_Emperor\\_Honorius\\_-\\_1880.jpg](http://en.wikipedia.org/wiki/File:Jean-Paul_Laurens_-_The_Byzantine_Emperor_Honorius_-_1880.jpg)



**Obr. 56: Jean-Léon Gérôme, *Diogenes*, 1860, olej na plátne, 74,5 × 101 cm, Walters Art Gallery, Baltimore.**

Zdroj: <http://art.thewalters.org/detail/31957/diogenes/>





**Obr. 57: Jules Bastien-Lepage, *Diogenes*, 1873, olej na plátne, neznáme rozmery, Musée Marmottan Monet, Paris.**

Zdroj: [http://en.wikipedia.org/wiki/File:Bastien-Lepage\\_Diogenes.jpg](http://en.wikipedia.org/wiki/File:Bastien-Lepage_Diogenes.jpg)



**Obr. 58: John William Waterhouse, *Diogenes*, 1882, olej na plátne, 208,3 × 134,6 cm, Art Gallery of New South Wales, Sydney.**

Zdroj: <http://en.wikipedia.org/wiki/File:Waterhouse-Diogenes.jpg>



**Obr. 59: John Everett Millais, *Esther*, 1865, olej na plátne, 105,5 × 75 cm, súkromná zbierka.**

Zdroj: <http://en.wikipedia.org/wiki/File:Esthermillais.jpg>



**Obr. 60:** Sir John Poynter, *Zenobia Captive*, 1878, olej na plátne, 71,2 × 53,4 cm, súkromná zbierka.

Zdroj:

[http://commons.wikimedia.org/wiki/File:Sir\\_Edward\\_Poynter,\\_Zenobia\\_Captive\\_1878.jpg](http://commons.wikimedia.org/wiki/File:Sir_Edward_Poynter,_Zenobia_Captive_1878.jpg)



**Obr. 61: Alexandre Cabanel, *Samson et Dalila*, 1878, olej na plátne, 92,7 × 64,8 cm, súkromná zbierka.**

Zdroj: [http://fr.wikipedia.org/wiki/Fichier:Alexandre\\_Cabanel\\_-\\_Samson\\_and\\_Delilah.jpeg](http://fr.wikipedia.org/wiki/Fichier:Alexandre_Cabanel_-_Samson_and_Delilah.jpeg)



**Obr. 62: John William Waterhouse, *Mariamne*, 1887, olej na plátne, 259 × 180 cm, súkromná zbierka.**

Zdroj: <http://preraphaelitepaintings.blogspot.cz/2010/08/john-william-waterhouse-mariamne.html>



**Obr. 63: John William Waterhouse, *Consulting the Oracle*, 1884, olej na plátne, 119,4 × 198,1 cm, Tate, London.**

Zdroj: [http://en.wikipedia.org/wiki/File:John\\_William\\_Waterhouse\\_oracle\\_1884.png](http://en.wikipedia.org/wiki/File:John_William_Waterhouse_oracle_1884.png)



**Obr. 64: John William Waterhouse, *Saint Eulalia*, 1885, olej na plátne, 188,6 × 117,5 cm, Tate, London.**

Zdroj: [http://en.wikipedia.org/wiki/File:John\\_William\\_Waterhouse\\_-\\_Saint\\_Eulalia\\_-\\_1885.jpg](http://en.wikipedia.org/wiki/File:John_William_Waterhouse_-_Saint_Eulalia_-_1885.jpg)





**Obr. 65: Gustave Moreau, *Les Sirènes*, 1875-1880?, olej na plátne, 89 × 118 cm, Musée Gustave Moreau, Paris.**

Zdroj: <http://www.dessins-musee-moreau.fr/img/peintures/inv.13957.jpg>



**Obr. 66: Léon Auguste Adolphe Belly, *Les Sirènes*, 1867, olej na plátne, 363 × 300 cm, Musée de l'Hôtel Sandelin, Saint-Omer.**

Zdroj: [http://moteur.musenor.com/images/saintomer/g2018003\\_4.jpg](http://moteur.musenor.com/images/saintomer/g2018003_4.jpg)



**Obr. 67: Herbert James Draper, *Ulysses and the Sirens*, 1909, olej na plátne, 213 × 177 cm, Ferens Art Gallery, Hull.**

Zdroj: [http://fr.wikipedia.org/wiki/Fichier:Draper-Ulysses\\_and\\_Sirens.jpg](http://fr.wikipedia.org/wiki/Fichier:Draper-Ulysses_and_Sirens.jpg)



Obr. 68: Otto Geiner, *Odysseus und die Sirenen*, 1902, olej na plátne, 60,5 × 121 cm, Museum der bildenden Künste, Leipzig.

Zdroj: <http://www.artvalue.com/auctionresult--circle-of-greiner-otto-1869-19-odysseus-und-die-sirenen-2944047.htm>



**Obr. 69: Sir Edward Burne-Jones, *The Sirens*, 1891-1898, olej na plátne, neznáme rozmery, Ringling Museum of Art, Florida.**

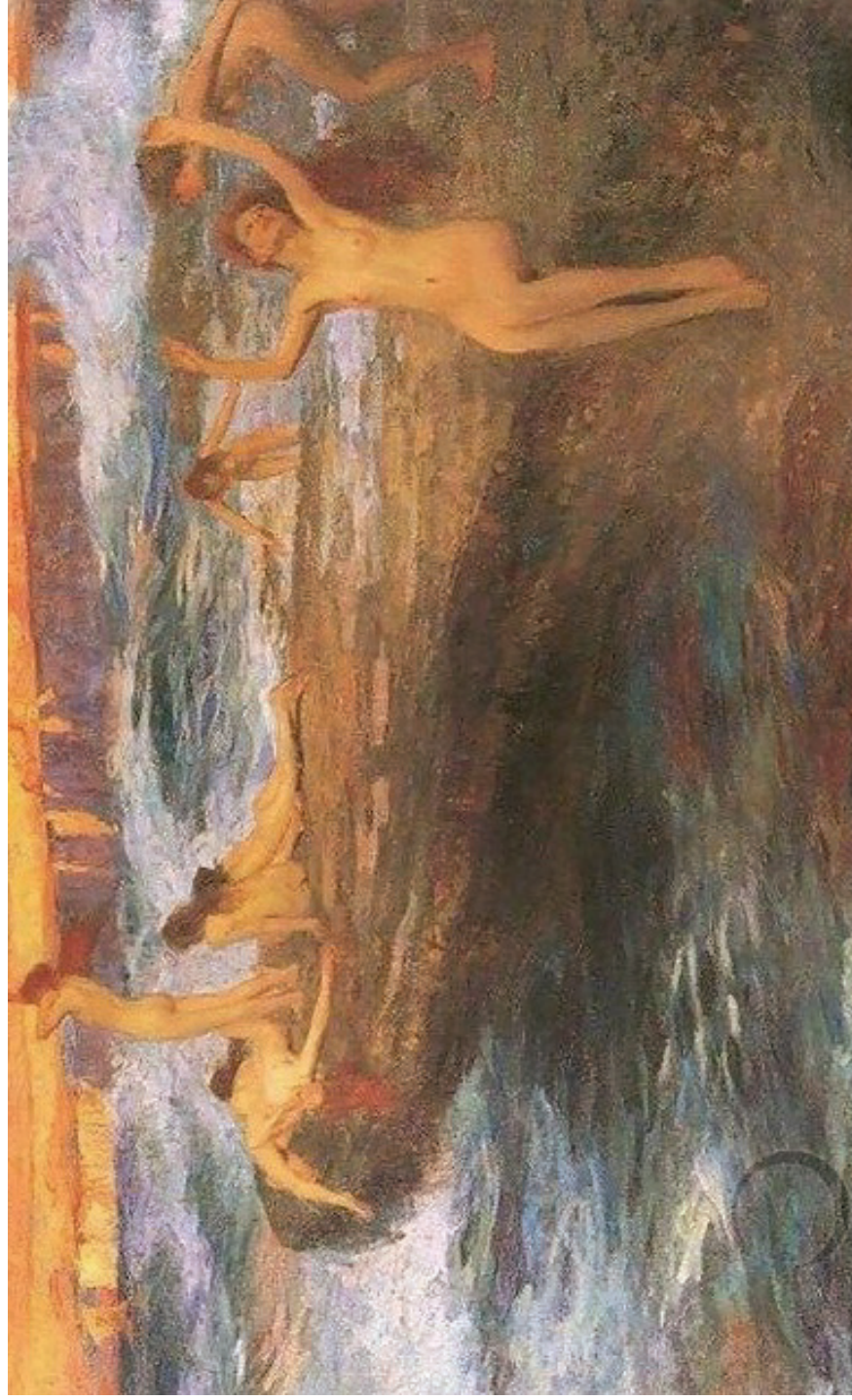
Zdroj: <http://brighttraces.tumblr.com/post/6529497375/loveinthelightning-the-sirens-edward>



**Obr. 70: Sir Edward Poynter, *The Cave of the Storm Nymphs*, 1903, olej na plátne, 148 × 112 cm, súkromná zbierka.**

Zdroj:

[http://en.wikipedia.org/wiki/File:Sir\\_Edward\\_John\\_Poynter\\_%E2%80%94\\_Cave\\_of\\_the\\_Storm\\_Nymphs.jpg](http://en.wikipedia.org/wiki/File:Sir_Edward_John_Poynter_%E2%80%94_Cave_of_the_Storm_Nymphs.jpg)



**Obr. 71: John William Whiteley, *A Sail*, 1898, olej na plátne, neznáme rozmery, neznáme umiestnenie.**

Zdroj: [http://www.wikigallery.org/wiki/painting\\_147124/John-William-Whiteley/A-Sail](http://www.wikigallery.org/wiki/painting_147124/John-William-Whiteley/A-Sail)



Obr. 72: John William Waterhouse, *Ulysses and the Sirens*, 1891, olej na plátne, 99 × 201 cm, National Gallery of Victoria, Australia.

Zdroj: [http://en.wikipedia.org/wiki/File:John\\_William\\_Waterhouse\\_-\\_Ulysses\\_and\\_the\\_Sirens\\_\(1891\).jpg](http://en.wikipedia.org/wiki/File:John_William_Waterhouse_-_Ulysses_and_the_Sirens_(1891).jpg)





**Obr. 73: Dante Gabriel Rosseti, *Ligeia Siren*, 1873, krieda, 78,7 × 47 cm, súkromná zbierka.**

Zdroj: [http://allart.biz/photos/image/Dante\\_Gabriel\\_Rossetti\\_83\\_Ligeia\\_Siren.html](http://allart.biz/photos/image/Dante_Gabriel_Rossetti_83_Ligeia_Siren.html)



**Obr. 74: Sir Edward Poynter, *The Siren*, 1864, olej na plátne, neznáme rozmery, súkromná zbierka.**

Zdroj: <http://oldpainting.tumblr.com/post/25524379800/edward-poynter-the-siren-on-flickr>



**Obr. 75: Luis Loeb, *The Siren*, 1904, olej na plátne, 88,5 × 73,4 cm, Smithsonian American Art Museum and Renwick Gallery, Washington.**

Zdroj: <http://www.americanart.si.edu/collections/search/artwork/?id=14867>



**Obr. 76: J. Humphreys Johnston, 1898, olej na plátne, rozmery a umiestnenie neznáme.**

Zdroj: Dijkstra, B. 1986: Idols of Perversity, Fantasies of Feminine Evil in Fin-de-Siecle Culture. New York, s. 268



**Obr. 77: Gustave Moreau, *Le Poète et la Sirène*, 1894, olej na plátne, 158 × 115 cm, Musée Gustave Moreau, Pariž.**

Zdroj: <http://www.artmagick.com/pictures/picture.aspx?id=5253&name=the-poet-and-the-siren>



**Obr. 78: Sir Edward Burne-Jones, *The Depths of the Sea*, 1887, olej na plátne, neznáme rozmery, súkromná zbierka.**

Zdroj: <http://www.oilpaintingfactory.com/english/oil-painting-109151.htm>



**Obr. 79: Aristide Sartorio, *The Green Abyss*, 1895, olej na plátne, neznáme rozmery, súkromná zbierka.**

Zdroj: <http://www.augustastylianougallery.com/Gallery/GiulioAristideSartorio/SirenOrTheGreenAbyss.html>



**Obr. 80: Charles Dana Gibson, *In The Swim*, 1900, kresba, rozmary a umiestnenie neznáme.**

Zdroj: [http://www.pdmpantiqueprints.com/store/By-Artist-Engraver-Publisher-Gibson-Charles-Dana/In-the-Swim/prod\\_5195.html](http://www.pdmpantiqueprints.com/store/By-Artist-Engraver-Publisher-Gibson-Charles-Dana/In-the-Swim/prod_5195.html)





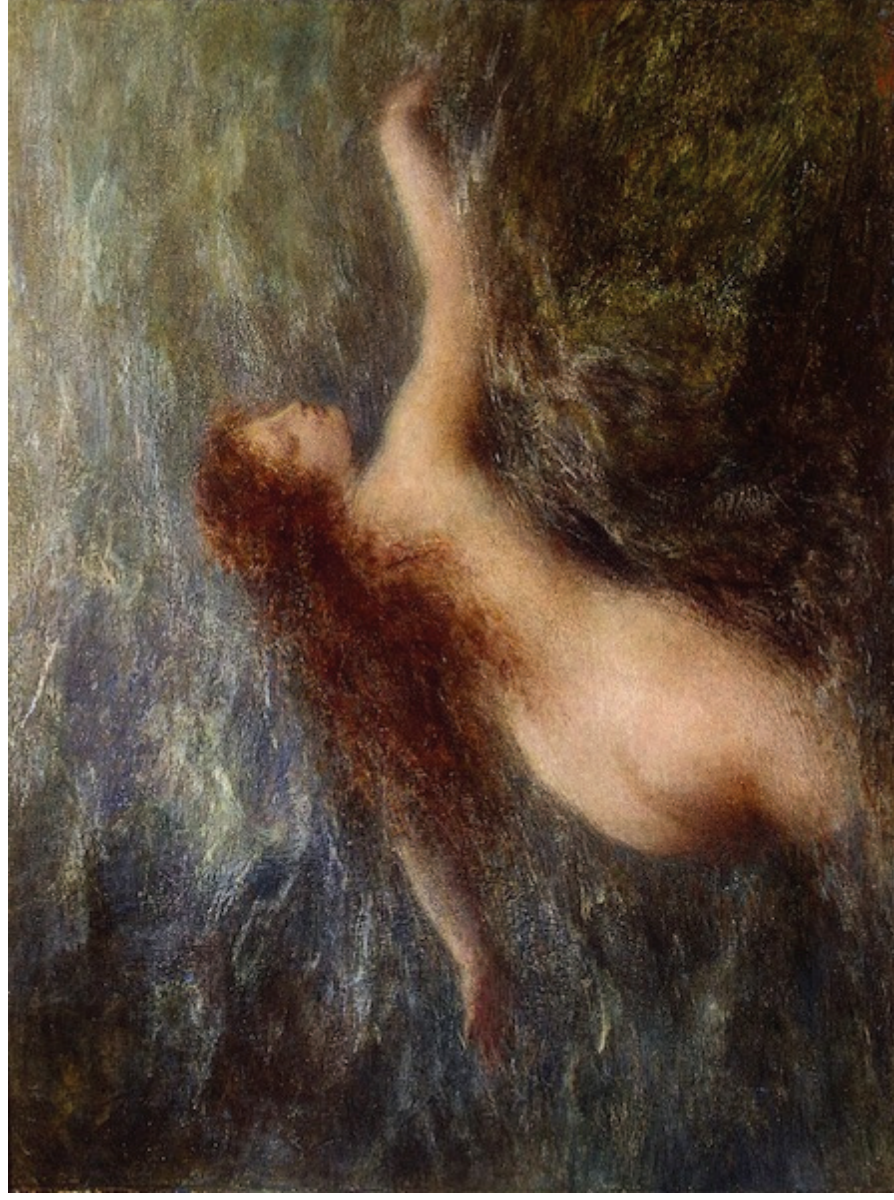
**Obr. 81: John William Waterhouse, *The Siren*, 1900, olej na plátne, 81 × 53 cm, súkromná zbierka.**

Zdroj: [http://en.wikipedia.org/wiki/File:The\\_Siren.jpg](http://en.wikipedia.org/wiki/File:The_Siren.jpg)



**Obr. 82: Pierre-Auguste Renoir, *The Naiad*, 1876, olej na plátne, 27 × 22 cm, Galerie Daniel Malingue, Paríž.**

Zdroj: [http://www.magnoliabox.com/art/73742/The\\_Naiad\\_1876](http://www.magnoliabox.com/art/73742/The_Naiad_1876)



**Obr. 83: Henri Fantin-Latour, *Naiad*, 1896, olej na plátne, 41,5 × 55 cm, Ermitáž, Petrohrad.**

Zdroj: <http://www.arthermitage.org/Henri-Fantin-Latour/Naiad.html>



**Obr. 84: Henry James Draper, *Naiad's Pool*, neznámy dátum vzniku, olej na plátne, neznáme rozmery, súkromná zbierka.**

Zdroj: [http://it.wikipedia.org/wiki/File:Herbert\\_James\\_Draper,\\_Naiad's\\_Pool.jpg](http://it.wikipedia.org/wiki/File:Herbert_James_Draper,_Naiad's_Pool.jpg)



**Obr. 85: John William Waterhouse, *A Naiad*, 1893, olej na plátne, 66 × 127 cm, zbierka Sira Tima Ricea.**

Zdroj: <http://www.wikipaintings.org/en/john-william-waterhouse/the-naiad-1893>



**Obr. 86: Édouard Théophile Blanchard, *Hylas entraîné par les nymphes*, 1874, olej na plátne, neznáme rozmery, Musée des Beaux-Arts, Caen.**

Zdroj: <http://www.erevos.com/mythology/en/hylas.htm>



**Obr. 87: Henrietta Rae, *Hylas and the Water Nymphs*, 1910, olej na plátne, 142,3 × 222,8 cm, súkromná zbierka.**

Zdroj: [http://www.christies.com/LotFinder/lot\\_details.aspx?intObjectID=1946379](http://www.christies.com/LotFinder/lot_details.aspx?intObjectID=1946379)



Obr. 88: John William Waterhouse, *Hylas and the Water Nymphs*, 1896, olej na plátne, 98,2 × 163,3 cm, Manchester City Galleries.

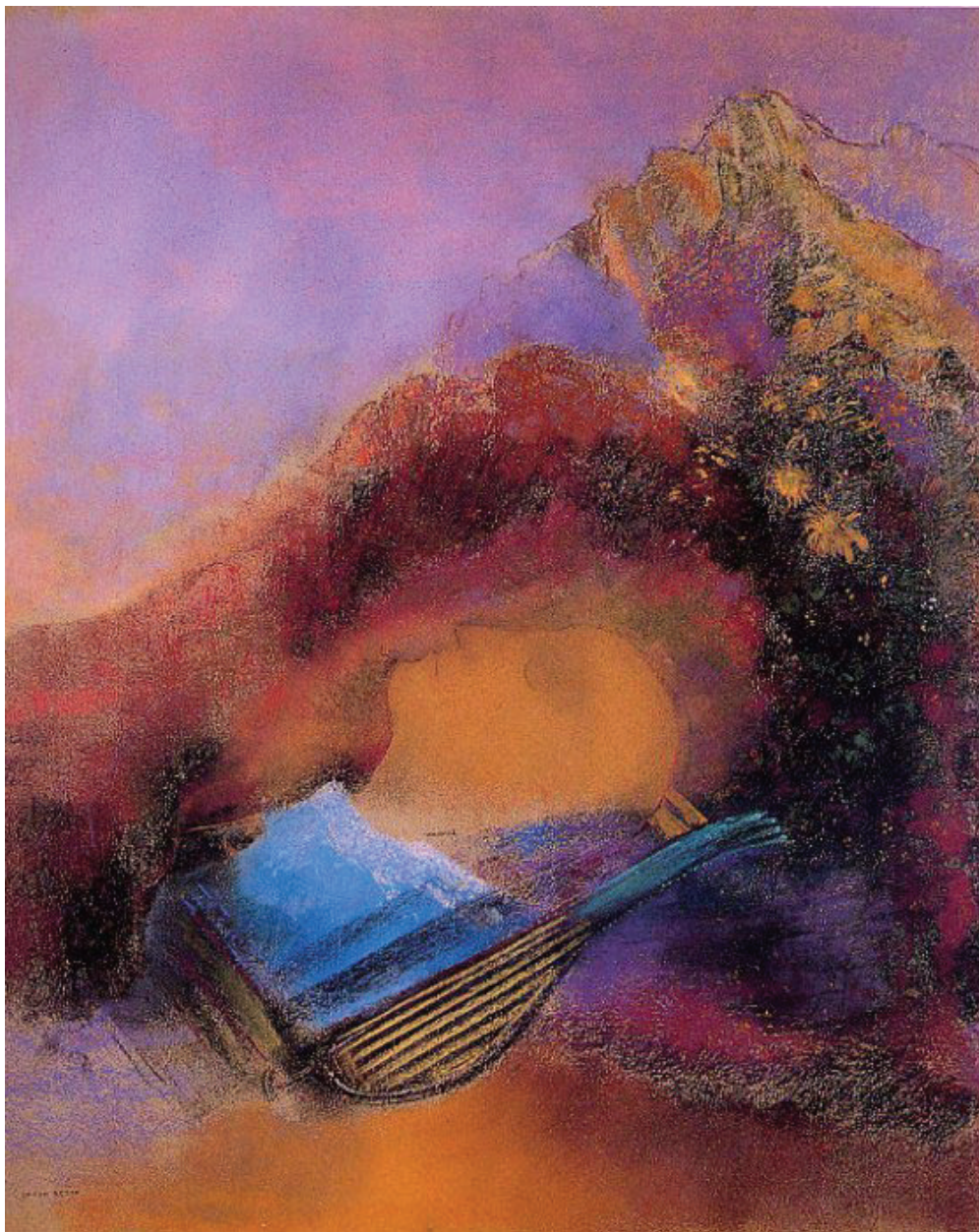
Zdroj: [http://en.wikipedia.org/wiki/File:John\\_William\\_Waterhouse\\_-\\_Hylas\\_and\\_the\\_Nymphs\\_\(1896\).jpg](http://en.wikipedia.org/wiki/File:John_William_Waterhouse_-_Hylas_and_the_Nymphs_(1896).jpg)





Obr. 89: Gustave Moreau, *Orphée*, 1865, olej na dreve, 154 × 99,5 cm, Musée d'Orsay, Paríž.

Zdroj: [http://www.musee-orsay.fr/fr/collections/oeuvres-commentees/peinture.html?no\\_cache=1&zoom=1&tx\\_damzoom\\_pi1%5BshowUid%5D=2292](http://www.musee-orsay.fr/fr/collections/oeuvres-commentees/peinture.html?no_cache=1&zoom=1&tx_damzoom_pi1%5BshowUid%5D=2292)



**Obr. 90: Odilon Redon, *Orphée*, 1903-1910, pastel na papieri, 68,8 × 56,8 cm, The Cleveland Museum of Art, Ohio.**

Zdroj: <http://www.flickr.com/photos/lechantdupain/160052049/>



**Obr. 91: Jean Delville, *Orphée*, 1893, olej na plátne, 79,3 × 99,2 cm, Musées royaux des beaux-arts de Belgique, Brusel.**

Zdroj: <http://lewebpedagogique.com/asphodele/2011/05/22/reseda-78/>



**Obr. 92: John William Waterhouse, *Nymphs Finding the Head of Orpheus*, 1900, olej na plátne, 149 × 99 cm, zbierka Sira Tima Ricea.**

Zdroj: <http://www.johnwilliamwaterhouse.com/pictures/nymphs-head-orpheus-1900/>



**Obr. 93: John William Waterhouse, *The Charmer*, 1911, olej na plátne, 97 × 61 cm, súkromná zbierka.**

Zdroj: <http://www.johnwilliamwaterhouse.com/pictures/charmer-1911/>



**Obr. 94: Sir Edward Burne-Jones, *The Wedding of Psyche*, 1895, olej na plátne, neznáme rozmery, Musées Royaux des Beaux-Arts de Belgique, Brusel.**

Zdroj: <http://www.wikipaintings.org/en/edward-burne-jones/the-wedding-of-psyche-1895>



**Obr. 95: Sir Edward Burne-Jones, *Pan and Psyche*, 1872-1874, olej na plátne, 65,1 × 53,3 cm, Fogg Art Museum, Harvard University Art Museums.**

Zdroj: <http://www.illusiongallery.com/Pan-Psyche.html>



**Obr. 96: Sir Edward Burne-Jones, *Cupid Delivering Psyche*, 1871, olej na plátne, neznáme rozmery, Sheffield Art Gallery, Sheffield.**

Zdroj: <http://www.abcgallery.com/B/burne-jones/burnejones22.html>





**Obr. 97: Sir Edward Burne-Jones, *Psyche sent by Venus with a casket to Proserpine, passes safely through the Shadowy Meads, disregarding the call for help from the Shadowy Men trying to load an ass, and the three old women weaving, who are set to ensnare her*, 1872-1881, olej na plátne, 119,5 × 124,5 cm, Birmingham Museums and Art Gallery.**

Zdroj: <http://www.preraphaelites.org/the-collection/1922p195/cupid-and-psyche-palace-green-murals-psyche-set-by-venus-the-task/>



**Obr. 98: Sir Edward Burne-Jones, *Psyche giving the coin to the Ferryman of the Styx: The Dead Man in the form of Psyche's father rising from the water as Psyche is ferried across to Hades*, 1872-1881, olej na plátne, 119,5 × 266,7 cm. Birmingham Museums and Art Gallery.**

Zdroj: <http://www.preraphaelites.org/the-collection/1922p196/cupid-and-psyche-palace-green-murals-psyche-giving-the-coin-to-the-ferryman-of-the-styx/>



**Obr. 99: J. R. Spencer-Stanhope, *Charon and Psyche*, 1883, olej na plátne, 95,2 × 132,4 cm, súkromná zbierka.**

Zdroj: [http://upload.wikimedia.org/wikipedia/en/4/4c/Charon\\_and\\_Psyche.jpg](http://upload.wikimedia.org/wikipedia/en/4/4c/Charon_and_Psyche.jpg)



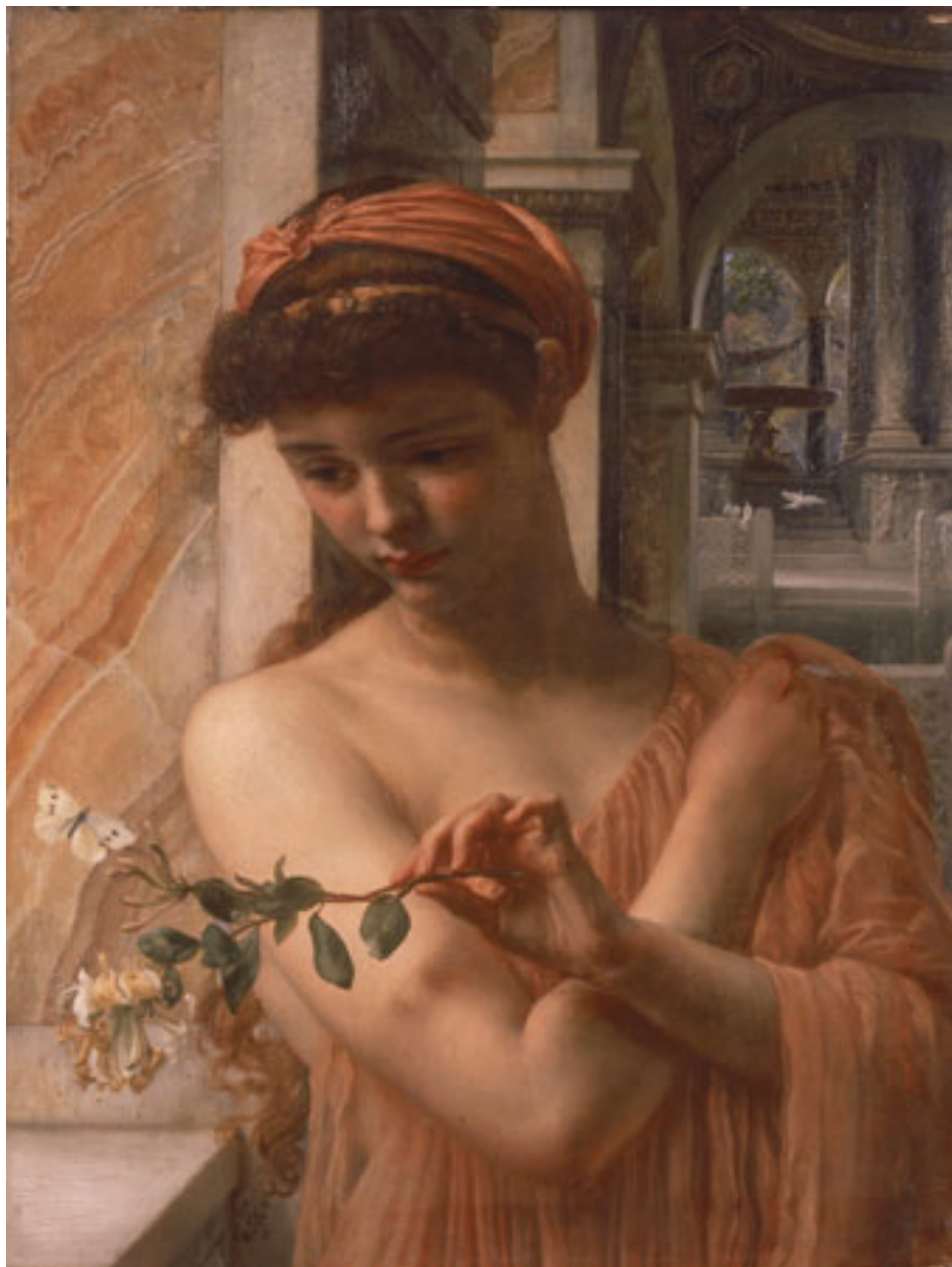
Obr. 100: J. R. Spencer-Stanhope, *Cupid and Psyche*, olej na plátne, neznáme rozmery, neznáme umiestnenie.

Zdroj: <http://www.artmagick.com/pictures/picture.aspx?id=6798&name=cupid-and-psyche>



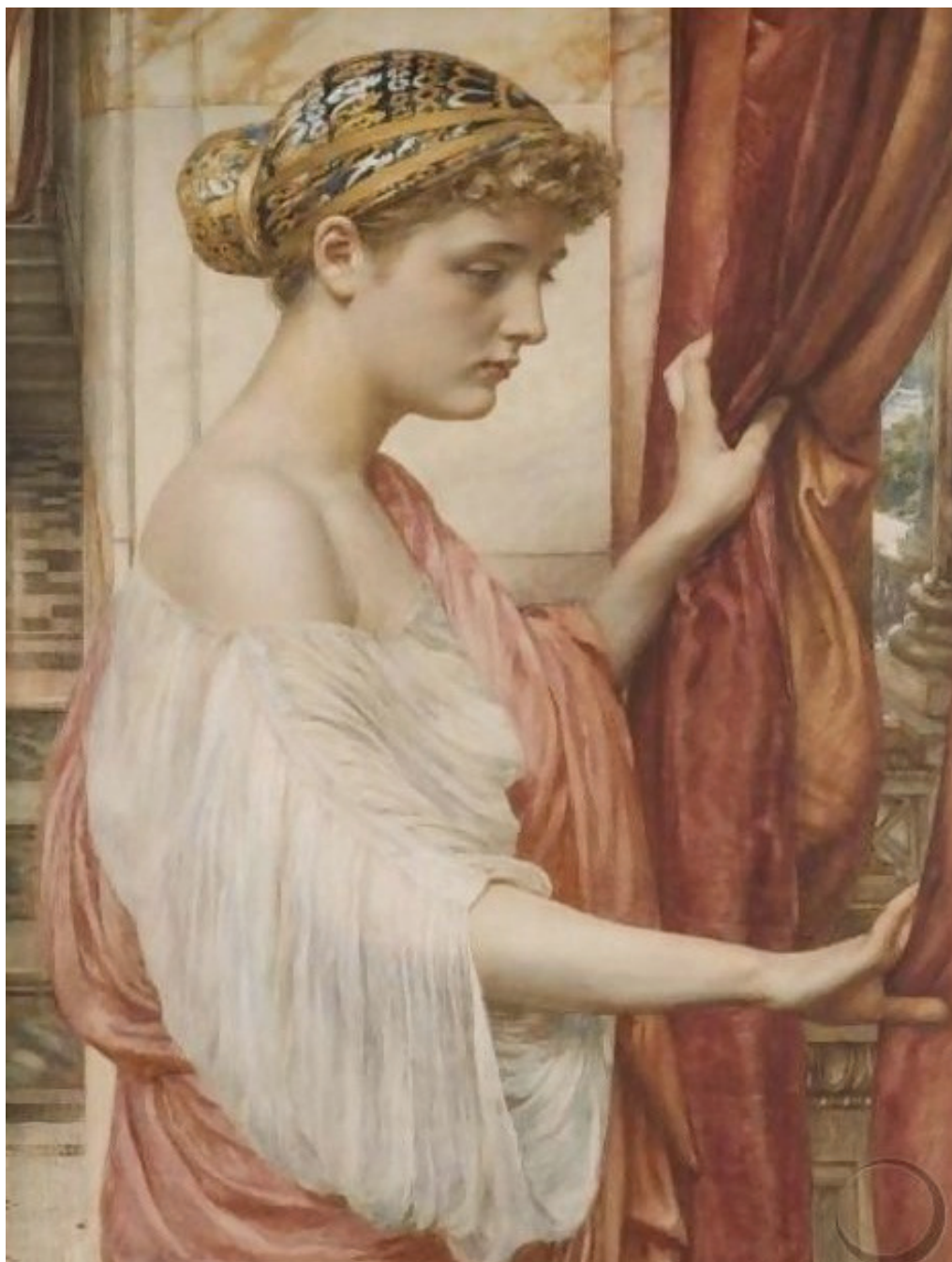
Obr. 101: J. R. Spencer-Stanhope, *Labours of Psyche*, 1873, tempera na 4 paneloch spoločne rámovaných, neznáme rozmery, súkromná zbierka.

Zdroj: [http://www.magnoliabox.com/art/336125/The\\_Labours\\_of\\_Psyche\\_1873](http://www.magnoliabox.com/art/336125/The_Labours_of_Psyche_1873)



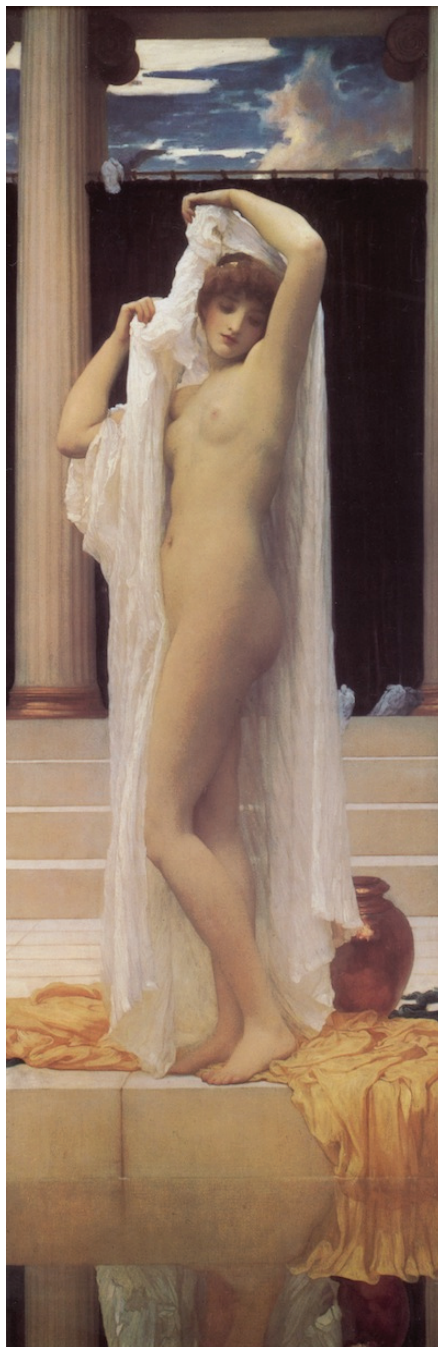
**Obr. 102: Sir Edward Poynter, *Psyche in the Temple of Love*, 1882, olej na plátne, 66,3 × 50,7 cm, Walker Art Gallery, Liverpool.**

Zdroj: <http://www.artmagick.com/pictures/picture.aspx?id=5838&name=psyche-in-the-temple-of-love>



**Obr. 103: Sir Edward Poynter, *Psyche*, 1884, akvarel, 75 × 55 cm, súkromná zbierka.**

Zdroj: <http://www.mutualart.com/Artwork/PSYCHE/D1B6285C9A7FFB5F>



**Obr. 104: Frederic Leighton, *Bath of Psyche*, 1890, olej na plátne, 189,2 × 66,2 cm, Tate, Londýn.**

Zdroj: <http://www.tate.org.uk/art/artworks/leighton-the-bath-of-psyche-n01574>





**Obr. 105: John William Waterhouse, *Psyche Opening the Door into Cupid's Garden*, 1903, olej na plátne, 109,5 × 72 cm, Harris Museum and Art Gallery, Preston.**

Zdroj: <http://www.jwwaterhouse.com/view.cfm?recordid=80>



**Obr. 106: John William Waterhouse, *Psyche Opening the Golden Box*, 1903, olej na plátne, 117 × 74 cm, súkromná zbierka.**

Zdroj: <http://www.johnwaterhouse.com/view.cfm?recordid=51>



**Obr. 107: J. R. Spencer-Stanhope, *Penelope*, 1849, olej na plátne, 60 × 44,7 cm, neznáme umiestnenie.**

Zdroj:

<http://www.mlahanas.de/Greeks/Mythology/PenelopeJohnRoddamSpencerStanhope.html>



**Obr. 108: Dante Gabriel Rossetti, *Penelope*, 1869, krieda na papieri, 89 × 67 cm, súkromná zbierka.**

Zdroj: <http://www.wikipaintings.org/en/dante-gabriel-rossetti/penelope-1869>



**Obr. 109: A. Frederick Sandys, *Penelope*, 1879, olej na plátne, neznáme rozmery, neznáme umiestnenie.**

Zdroj: <http://www.humanitiesweb.org/spa/gcp/ID/282>



**Obr. 110: Dora Wheeler, *Penelope Unraveling Her Work at Night*, 1886, hodváb vyšívavý hodvábnou nit'ou, 114,3 × 172,7 cm, The Metropolitan Museum of Art, New York.**

Zdroj: <http://www.metmuseum.org/toah/works-of-art/2002.230>



Obr. 111: John William Waterhouse, *Penelope and the Suitors*, 1912, olej na plátne, 129,8 × 188 cm, Aberdeen Art Gallery and Museums, Aberdeen, Veľká Británia.

Zdroj: <http://www.johnwilliamwaterhouse.com/pictures/penelope-suitors-1912/>



**Obr. 112: Bernardino Pintoricchio, *Penelope with the Suitors*, 1509, freska, 125,5 × 152 cm, The National Gallery, Londýn.**

Zdroj: <http://www.nationalgallery.org.uk/paintings/pintoricchio-penelope-with-the-suitors>





**Obr. 113: A. Frederick Sandys, *Medea*, 1866-1868, olej na plátne, 61,2 × 45,6 cm, Birmingham Museum and Ar Gallery, Birmingham.**

Zdroj: <http://en.wikipedia.org/wiki/File:Medea-Sandys.jpg>



**Obr. 114: Evelyn de Morgan, *Medea*, 1889, olej na plátne, neznáme rozmery, Williamson Art Gallery, Birkenhead, Veľká Británia.**

Zdroj: [http://en.wikipedia.org/wiki/File:De\\_Morgan\\_Medea.jpg](http://en.wikipedia.org/wiki/File:De_Morgan_Medea.jpg)



**Obr. 115: Herbert James Draper, *The Golden Fleece*, 1904, olej na plátne, 155 × 272,5 cm, Bradford Museums and Galleries, Bradford.**

Zdroj: <http://www.victorianweb.org/painting/draper/paintings/8.html>



**Obr. 116: John William Waterhouse, *Jason and Medea*, 1907, olej na plátne, 134 × 107 cm, súkromná zbierka.**

Zdroj: <http://www.wikipaintings.org/en/john-william-waterhouse/jason-and-medea-1907>



**Obr. 117: John William Waterhouse, štúdie k *Jason and Medea*, 1906–1907, kresba na papieri, 17,6 × 24,7 cm, Victoria and Albert Museum, Londýn.**

Zdroj: fotografia z Trippi, P. 2002: *J. W. Waterhouse*, London, 191.



Obr. 118: Benjamin West, *Narcissus and Echo*, 1805, olej na plátne, 60,9 × 91,4 cm, súkromná zbierka.

Zdroj: [http://www.artinthepicture.com/paintings/Benjamin\\_West/Narcissus-and-Echo/](http://www.artinthepicture.com/paintings/Benjamin_West/Narcissus-and-Echo/)



**Obr. 119: Solomon J. Solomon, *Echo and Narcissus*, 1895, olej na plátne, neznáme rozmery, neznáme umiestnenie.**

Zdroj: <http://www.victorianweb.org/painting/solomonsj/paintings/4.html>



**Obr. 120: Alexandre Cabanel, *Echo*, 1874, olej na plátne, 99,8 × 66,7 cm, The Metropolitan Museum of Art, New York.**

Zdroj: <http://www.metmuseum.org/collections/search-the-collections/110000262>





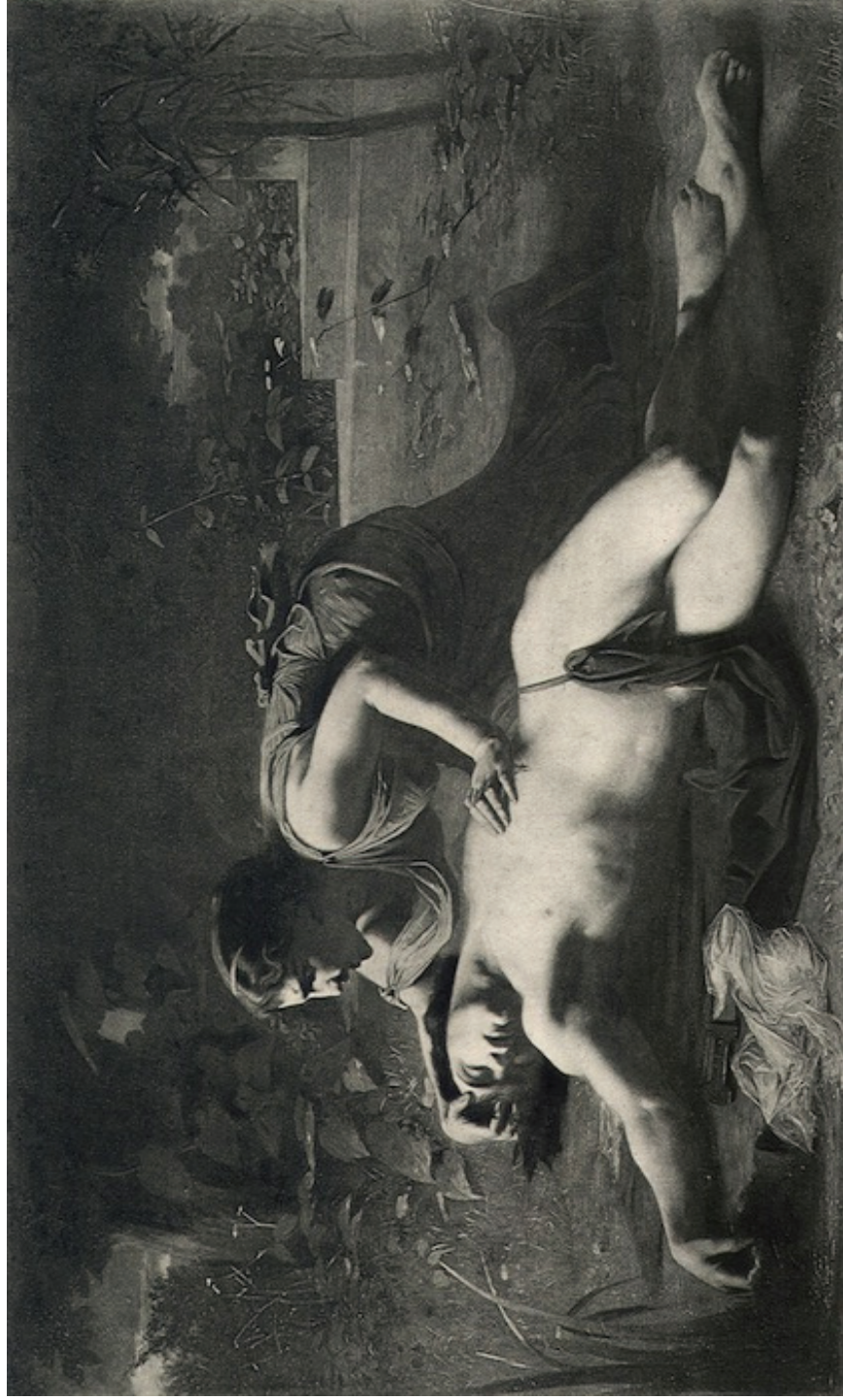
**Obr. 121: Gyula Benczur, *Narcissus*, 1881, olej na plátne, 115 × 110,5 cm, Magyar Nemzeti Galéria, Budapešť.**

Zdroj: <http://en.wikipedia.org/wiki/File:Benczur-narcissus.jpg>



Obr. 122: John William Waterhouse, *Echo and Narcissus*, 1903, olej na plátne, 109,2 × 189,2 cm, Walker Art Gallery, Liverpool.

Zdroj: <http://en.wikipedia.org/wiki/File:Echoandnarcissus.jpg>



**Obr. 123: Francois Alfred Delobbe, *Pyramus and Thisbe*, 1878, grafika podľa originálnej olejomalby, neznáme rozmery, neznáme umiestnenie.**

Zdroj: <http://www.artscroll.ru/page.php?id=65704>



**Obr. 124: Edwin Long, *Thisbe*, 1875, rytina, veľkosť neznáma, neznáme umiestnenie.**

Zdroj: <http://www.canvaz.com/gallery/23879.htm>



**Obr. 125: John William Waterhouse, *Thisbe*, 1909, olej na plátne, 97 × 59 cm, súkromná zbierka.**

Zdroj: <http://www.jwwaterhouse.com/view.cfm?recordid=57>



**Obr. 126: Sir Edward Burne-Jones, *Phyllis and Demophoon*, 1870, olej na plátne, 190,5 × 106,7 cm, Birmingham Museums and Art Gallery, Birmingham.**

Zdroj: [http://en.wikipedia.org/wiki/File:Edward\\_Burne-Jones\\_Phyllis\\_and\\_Demophoon\\_1870.jpg](http://en.wikipedia.org/wiki/File:Edward_Burne-Jones_Phyllis_and_Demophoon_1870.jpg)



**Obr. 127: Sir Edward Burne-Jones, *The Tree of Forgiveness*, 1882, olej na plátne, 191 × 107 cm, Lady Lever Art Gallery, Port Sunlight.**

Zdroj:

<http://www.liverpoolmuseums.org.uk/ladylever/collections/treeofforgiveness.asp>



**Obr. 128: John William Waterhouse, *Phyllis and Demophoon*, 1906, olej na plátne, 135 × 90 cm, umiestnenie neznáme.**

Zdroj: <http://www.johnwilliamwaterhouse.com/pictures/phyllis-demophoon-1907/>