

# Illustrations

## List of figures

**Fig. 1:** The chronology of the Balkans (Nikolova 1999, Table 1)

**Fig. 2:** A typical Yamnaya burial; the individual is laid in a supine position with bent legs and its skull is heavily stained by ochre. Photo was taken in the Pamukli Bair kurgan and represents Grave no. 17 (Alexandrov – Włodarczak 2022, 227)

**Fig. 3:** Typical Yamnaya hair-rings. These were found in various kurgans in modern-day Romania (Frînculeasa *et al.* 2019, Fig. 1 – 4)

**Fig. 4:** Animal teeth possibly used as necklaces. This find comes from Târgșoru Vechi in modern-day Romania (Frînculeasa *et al.* 2019, Fig. 5)

**Fig. 5:** Anthropomorphic stone stelae from Plachidol, Bulgaria (1), Ezerovo, Bulgaria (2), Kernosivka, Ukraine (3) (Anthony 2007, Fig. 13.11)

**Fig. 6:** The Yamnaya kurgans found around the Danube (Heyd 2011, Fig. 1)

**Fig. 7:** Catchments of Maritsa and Tundzha River (Roelevink *et al.* 2010, Fig. 2)

**Fig. 8:** Location of Bulgaria in Europe (Source: Wikimedia Commons)

**Fig. 9:** Districts of Bulgaria (Source: Wikimedia Commons)

**Fig. 10:** Municipalities of the Yambol District (Source: [guide-bulgaria.com](http://guide-bulgaria.com))

**Fig. 11:** Approximate localization of the kurgans (made by the author of this work)

**Fig. 12:** Profile of the Shekerdzha mogila (Димитрова *et al.* 2012, Fig. 1)

**Fig. 13:** Location of the graves in the Shekerdzha mogila (Димитрова *et al.* 2012, Fig. 2)

**Fig. 14:** The MBA „eagle amulets“ of Shekerdzha mogila (Димитрова *et al.* 2012, Fig. 3)

**Fig. 15:** The profile of the Gabrova Mogila (Димитрова *et al.* 2012, fig. 1)

**Fig. 16:** The location of the graves in Gabrova mogila (Димитрова *et al.* 2012, Fig. 2)

**Fig. 17:** Grave no. 30 of Gabrova Mogila (Димитрова *et al.* 2012, Fig. 3)

**Fig. 18:** Profile of the Straldzha kurgan (Бакърджиев – Илиев 2016, Fig. 1)

**Fig. 19:** Location of the graves in the Straldzha kurgan (Бакърджиев – Илиев 2016, Fig. 2)

**Fig. 20:** Location of the EBA inhumations of Sabev Bair (Iliev – Bakardzhiev 2020, Fig. 13)

**Fig. 21:** Location of the EBA cremations of Sabev Bair (Iliev – Bakardzhiev 2020, Fig. 12)

**Fig. 22:** The stone ring of Sabev Bair demarcating the location of all the EBA burials (Iliev – Bakardzhiev 2020, Fig. 16)

**Fig. 23:** The decorated bowl of Grave no. 1 from Sabev Bair, which contained remnants of ochre (Iliev – Bakardzhiev 2020, Fig. 30)

**Fig. 24:** Profile of Mogila 1 (Iliev – Bakardzhiev 2020, fig. 1)

**Fig. 25:** Location of the graves of Mogila 1 (Iliev – Bakardzhiev 2020, Fig. 2)

**Fig. 26:** Profile of the Irechekovo kurgan (Iliev – Bakardzhiev 2020, Fig. 34)

**Fig. 27:** Location of the graves of Irechekovo kurgan (Iliev – Bakardzhiev 2020, Fig. 35)

**Fig. 28:** Profile of the Lozianska mogila with all the uncovered graves (Agre 2008, Fig. 3)

**Fig. 29:** Grave no. 16 of Lozianska mogila; both the bodies are stained by ochre (Agre 2008, Fig. 2)

**Fig. 30:** Grave no. 14 of Lozianska Mogila; fragments of the wooden cover are visible above the deceased (Agre 2008, Fig. 4)

**Fig. 31:** Location of the graves present in Boyanovo 1 (Iliev – Bakardzhiev 2020, Fig. 40)

**Fig. 32:** The partially preserved hair rings of Grave no. 13 from Boyanovo 1 (Iliev – Bakardzhiev 2020, Fig. 51)

**Fig. 33:** Head of the deceased from Grave no. 13 of Boyanovo 1 (Iliev – Bakardzhiev 2020, Fig. 52)

**Fig. 34:** Profile of Pamukli Bair (Alexandrov - Włodarczak 2022, Fig. 6)

**Fig. 35:** Location of all the uncovered graves in Pamukli Bair (Alexandrov - Włodarczak 2022, Fig. 4)

**Fig. 36:** Photo of Grave no. 21 in Pamukli Bair; there is a lump of ochre visible next to his arm (Alexandrov - Włodarczak 2022, Fig. 12)

**Fig. 37:** Photos of Grave no. 17 from Pamukli Bair with two silver hair rings found inside (Włodarczak *et al.* 2023, Fig. 2)

**Fig. 37:** An artistic reconstruction of Grave no. 17 from Pamukli Bair with all its important features; by M. Podsiadło (Włodarczak *et al.* 2023, Fig. 4)

**Fig. 38:** Table of all the graves from Pamukli Bair with their radiocarbon dates (Alexandrov - Włodarczak 2022, Tab. 1)

EB I	Western Thrace/ the central Rhodope Mountains	Eastern Thrace	Northern Aegean	The middle and upper Strouma / Veitka Morava	Lower Danube	The southern middle Danube
2000 EB IIIB2	Yunatsite 1	Gulubovo		Vatina	Verbicioara	Vatina
2100 EB IIIB1	Yunatsite 2	Gulubovo		Ljuljaci I		
2200 EB IIIB1	Yunatsite 3	Nova Zagora 1-2?			Gornea-Orlești	Vinkovci
2300 EB IIIA2	Yunatsite 4	Ezero 1		Bubanj III	Bubanj III	Vinkovci
2400 EB IIIA2	Yunatsite 6-5 / Dubene IIC / Manole	Ezero 2	Sitagroi Vb2	Bubanj III / Vecina Mala/ Pernik	Od.Turcului / Zgal.-Lovech	Vinkovci
2500 EB IIIA1	Yunatsite 8-7 / Dubene IIB2	Ezero 4-3	Sitagroi Vb1	Bubanj III / Vecina Mala/Pernik	Ostrovul Corbului /	Vinkovci
2600 EB IIB2	Yunatsite 10-9 / Dubene IIB2	Ezero 5-4			Cojofeni III /PGC	Vučedol
2700 EB IIB1	Yunatsite 11 / Dubene IIB2	Ezero 7-6	Sitagroi Va2 / Dikili Tash IIIB	Ostrikovac Id	Cojofeni III / PGC	Vučedol / PGC
2800 EB IIB1	Yunatsite 12 / Dubene IIB2	Ezero 8/ Mednikarovo (PGC)	Sitagroi Va2 / Dikili Tash IIIB	Radomir later / Bubanj II	Cojofeni III / PGC	Vučedol / Kostolac / PGC
2900 EB IIA2	Yunatsite 13 / Dubene IIB1	Ezero 9/ Mednikarovo (PGC)	Sitagroi Va1 / Dikili Tash IIIB	Radomir later / Bubanj II/ Ostrikovac Ic	Cojofeni II / PGC	Vučedol / Kostolac / PGC
3000 EB IIIA1	Yunatsite 14 / Dubene IIB1	Ezero 10	Sitagroi Va1/ Dikili Tash IIIB	Hotovo/ Ostrikovac Ib	Cojofeni II / PGC	Kostolac / PGC
3100 EB IIB2	Yunatsite 15 / Dubene IIA	Ezero 11/ Golyama Detelina (PGC)	Sitagroi IVB / Dikili Tash IIIA	Novačka Čuprija/ Ostrikovac Ia	Cojofeni I / Orlea	Baden
3200 EB IIB1	Yunatsite 17-16 / Dubene IIA	Ezero 12-13 / Kar. VIIA Gol. Detelina	Sitagroi IVA/B / Dikili Tash IIIA	Novačka Čuprija	Celei / Cojofeni I	Baden
3300 EB IA-B	Yunatsite B17 / Dubene IIA ?		Sitagroi IVA / Dikili Tash IIIA	Radomir earlier	Cernavoda III	Baden
3400 EB IA2					Cernavoda III	Baden
3500 EB IA2					Cernavoda III	
3600 EB IA1					Hotnitsa-Vodopada	
3700 FC II					STBH / Cernavoda I	
3800 FC II	Yagodina / Haramijska Dupka	Turgovise / Drama		Kolarovo	STBH / Cernavoda I	Hunyadihalom-Vajska-
3900 FC I-II	Yagodina / Haramijska Dupka		Sitagroi III	Kolarovo	KSBC / Cernavoda I	Bodrogkeresztúr
4000 FC I	Yunatsite A				KSBC	Bodrogkeresztúr

Fig. 1: The chronology of the Balkans (Nikolova 1999, Table 1)



Fig. 2: A typical Yamnaya burial; the individual is laid in a supine position with bent legs and its skull is heavily stained by ochre. Photo was taken in the Pamukli Bair kurgan and represents Grave no. 17 (Alexandrov – Włodarczak 2022, 227)



Fig. 3: Typical Yamnaya hair-rings. These were found in various kurgans in modern-day Romania (Frînculeasa *et al.* 2019, Fig. 1 – 4)



Fig. 4: Animal teeth possibly used as necklaces. This find comes from Târgșoru Vechi in modern-day Romania (Frînculeasa *et al.* 2019, Fig. 5)

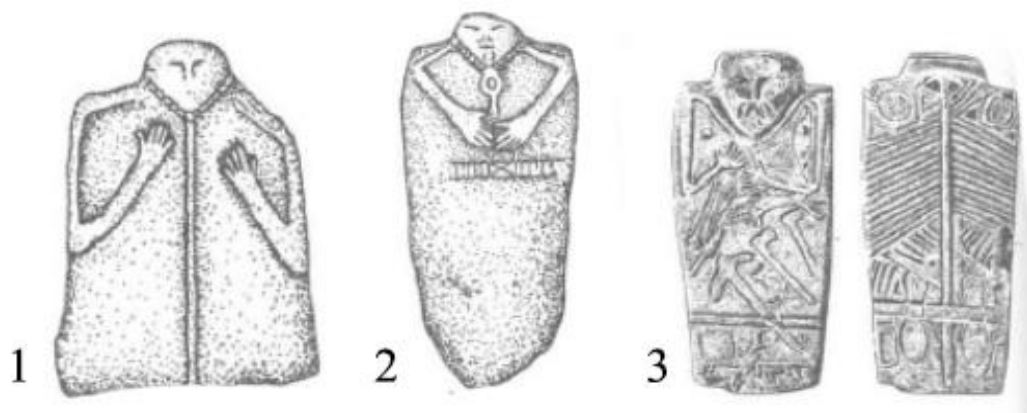


Fig. 5: Anthropomorphic stone stelae from Plachidol, Bulgaria (1), Ezerovo, Bulgaria (2), Kernosivka, Ukraine (3) (Anthony 2007, Fig. 13.11)



Fig. 6: The Yamnaya kurgans found around the Danube (Heyd 2011, Fig. 1)

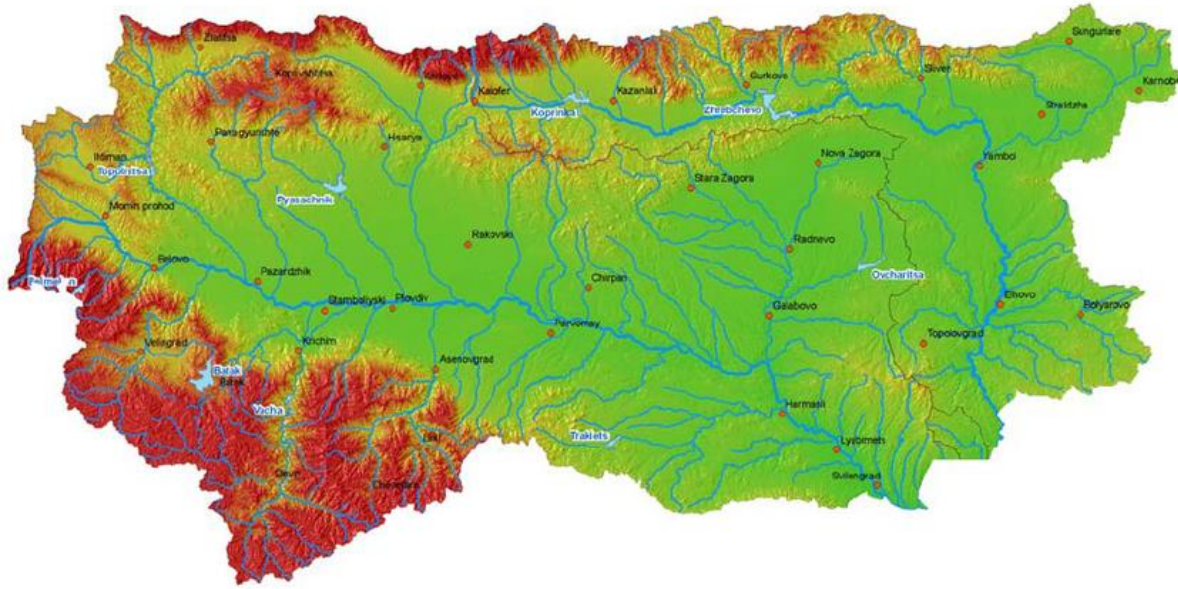


Fig. 7: Catchments of Maritsa and Tundzha River (Roelevink *et al.* 2010, Fig. 2)



Fig. 8: Location of Bulgaria in Europe (Source: Wikimedia Commons)



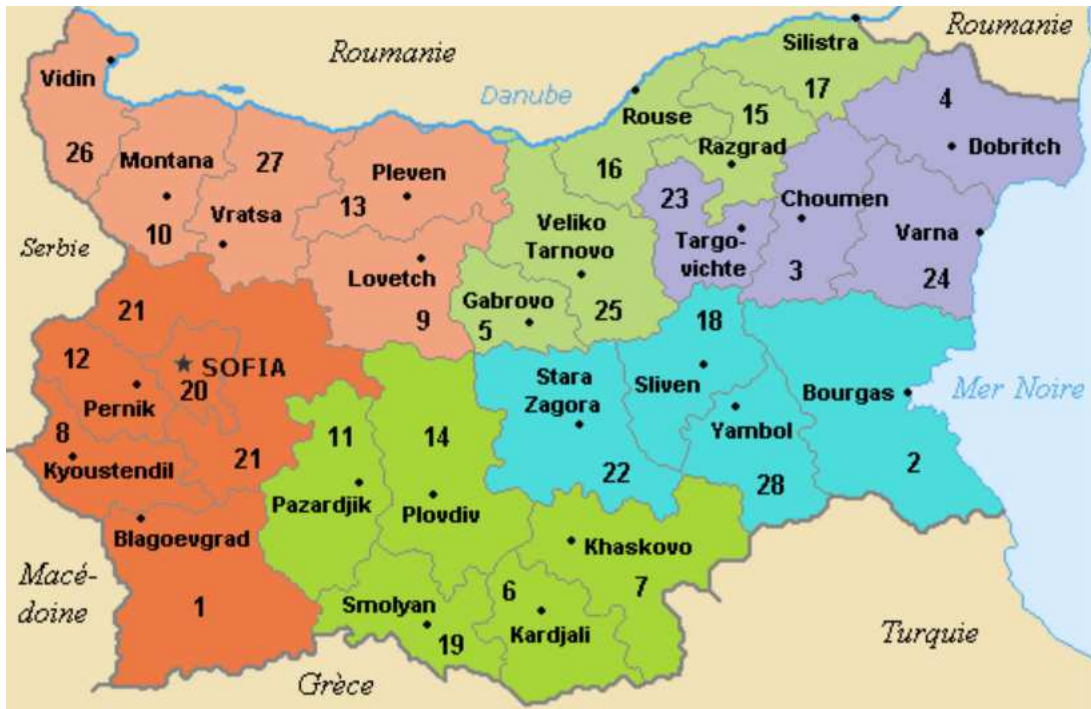


Fig. 9: Districts of Bulgaria (Source: Wikimedia Commons)



Fig. 10: Municipalities of the Yambol District (Source: guide-bulgaria.com)



### Legend

- Kurgans without Yamnaya burials
- Kurgans with Yamnaya burials
- Yambol
- ▲ Necropolises containing both Yamnaya and non-Yamnaya burials

Fig. 11: Approximate localization of the kurgans (made by the author of this work)

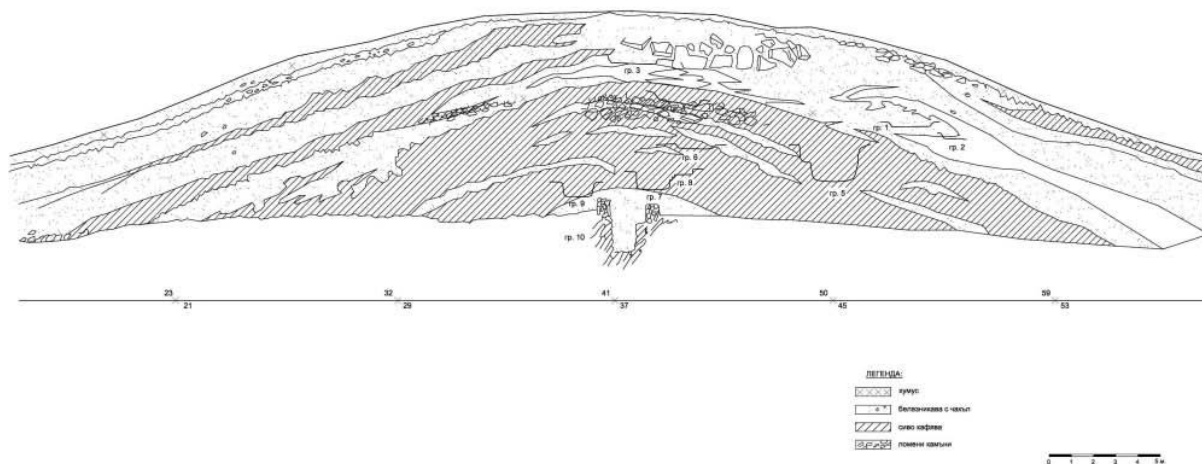


Fig. 12: Profile of the Shekerdzha mogila (Димитрова et. al 2012, Fig. 1)

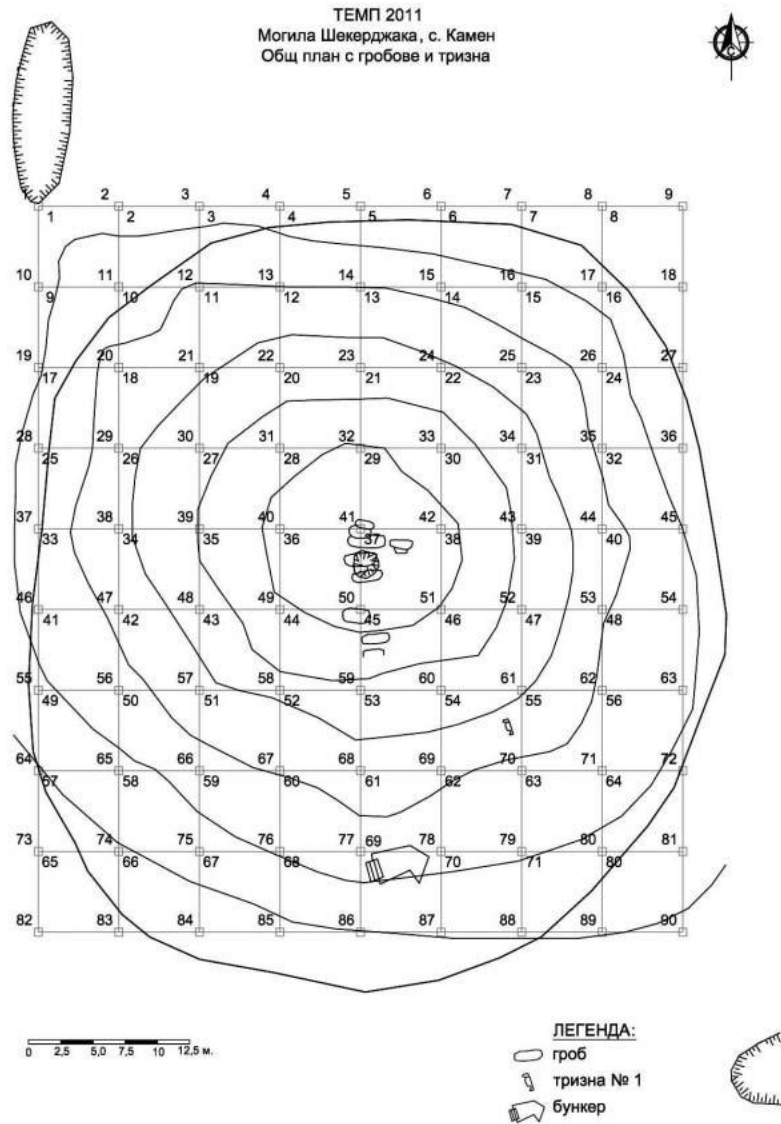


Fig. 13: Location of the graves in the Shekerdzha mogila (Димитрова et. al 2012, Fig. 2)



Fig. 14: The MBA „eagle amulets“ of Shekerdzha mogila (Димитрова et. al 2012, Fig. 3)

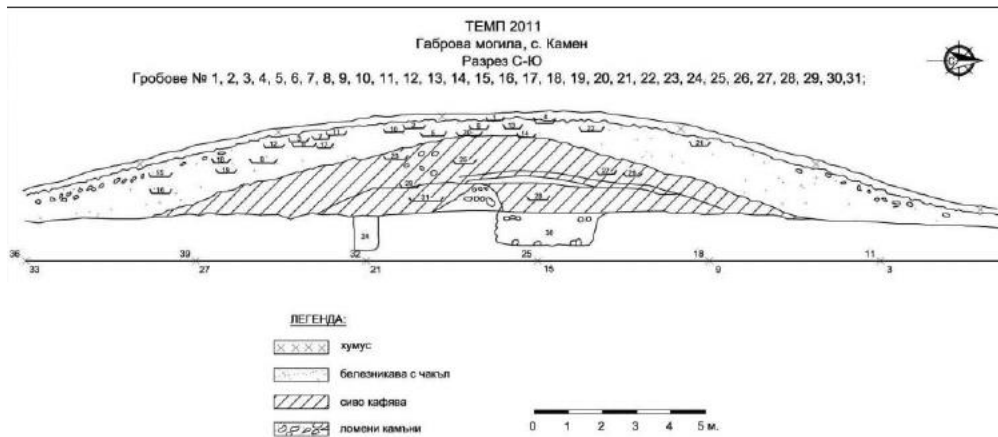


Fig. 15: The profile of the Gabrova Mogila (Димитрова *et al.* 2012, fig. 1)

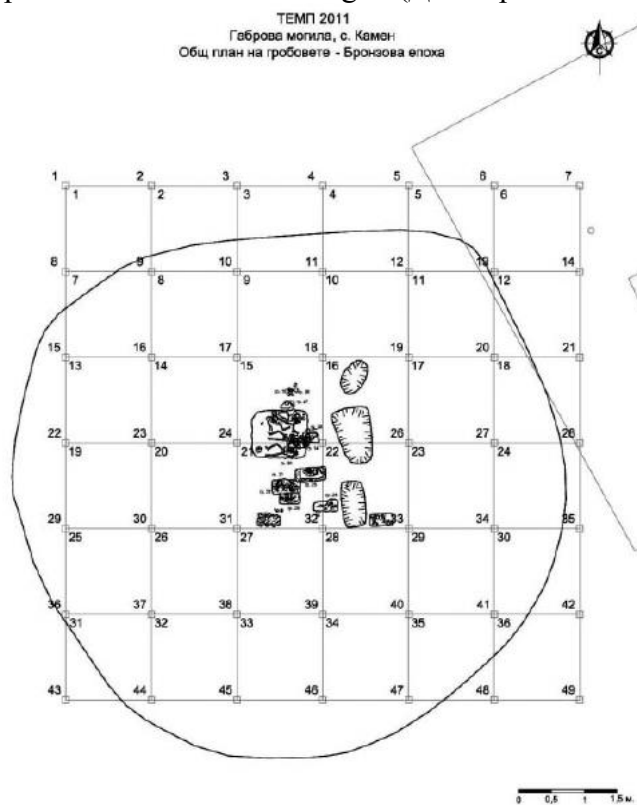


Fig. 16: The location of the graves in Gabrova mogila (Димитрова *et al.* 2012, Fig. 2)



Fig. 17: Grave no. 30 of Gabrova Mogila (Димитрова *et al.* 2012, Fig. 3)

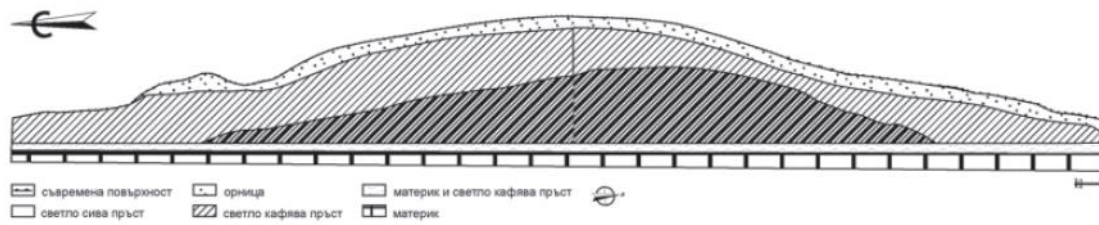


Fig. 18: Profile of the Straldzha kurgan (Бакърджиев – Илиев 2016, Fig. 1)

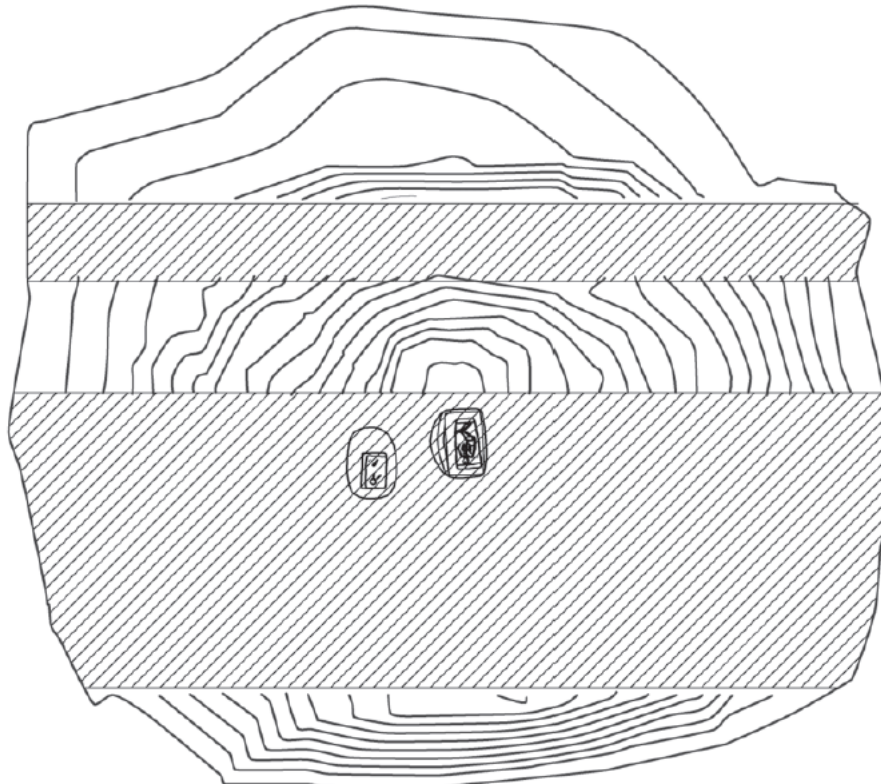


Fig. 19: Location of the graves in the Straldzha kurgan (Бакърджиев – Илиев 2016, Fig. 2)

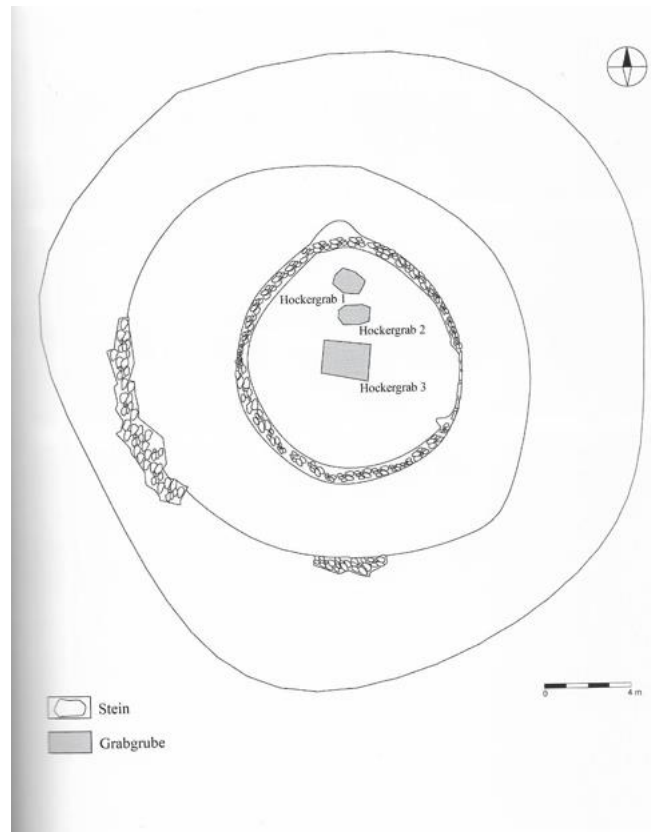


Fig. 20: Location of the EBA inhumations of Sabev Bair (Iliev – Bakardzhiev 2020, Fig. 13)

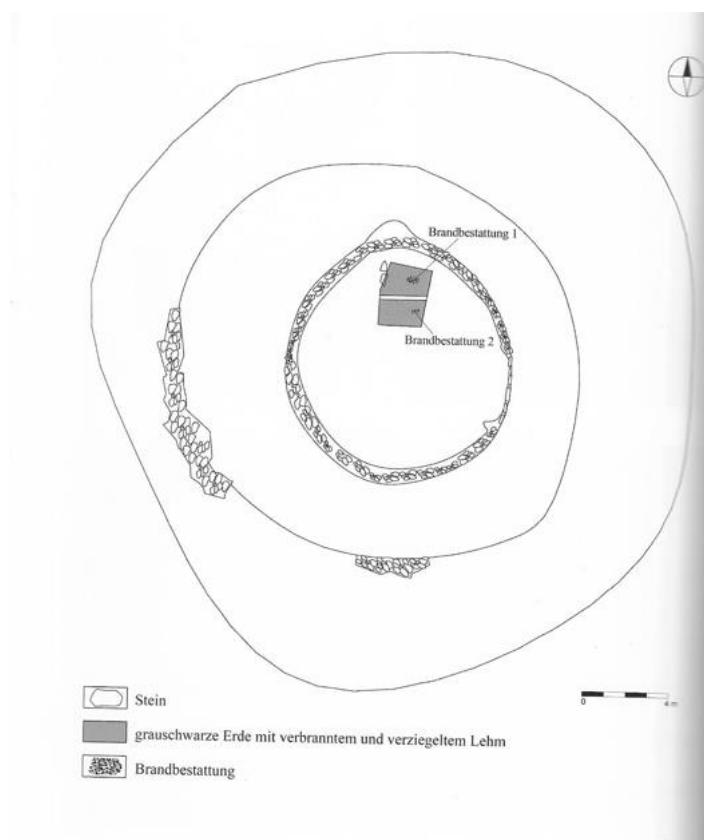


Fig. 21: Location of the EBA cremations of Sabev Bair (Iliev – Bakardzhiev 2020, Fig. 12)



Fig. 22: The stone ring of Sabev Bair demarcating the location of all the EBA burials (Iliev – Bakardzhiev 2020, Fig. 16)



Fig. 23: The decorated bowl of Grave no. 1 from Sabev Bair, which contained remnants of ochre (Iliev – Bakardzhiev 2020, Fig. 30)



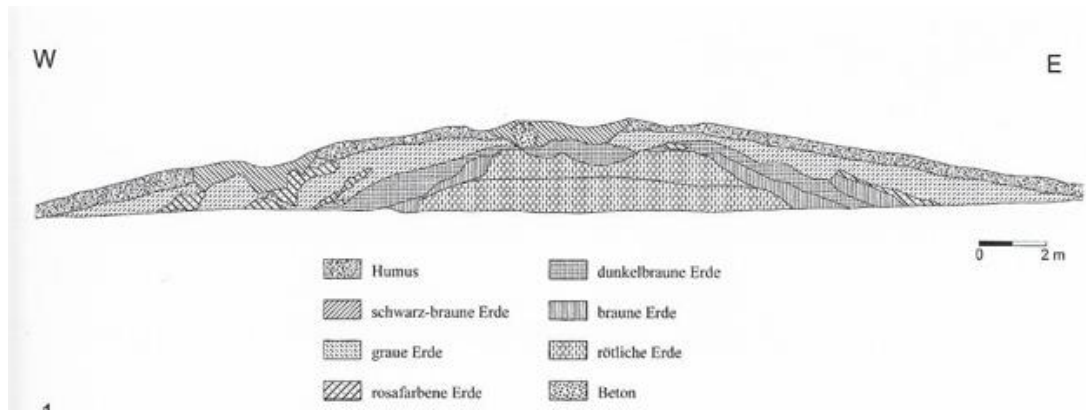


Fig. 24: Profile of Mogila 1 (Iliev – Bakardzhiev 2020, fig. 1)

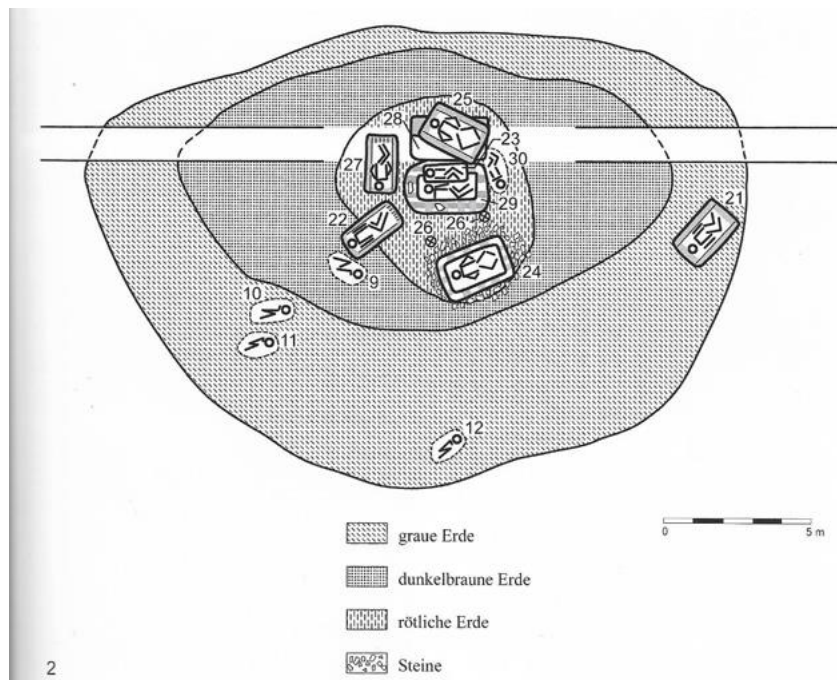


Fig. 25: Location of the graves of Mogila 1 (Iliev – Bakardzhiev 2020, Fig. 2)

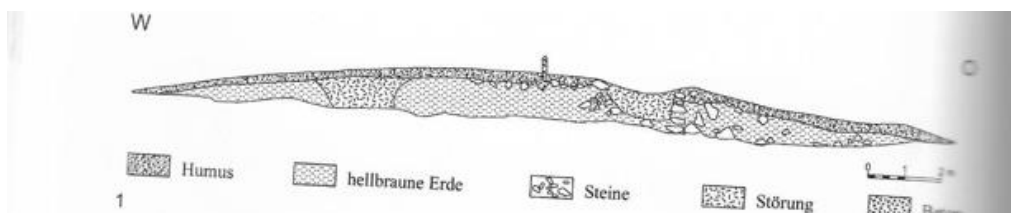


Fig. 26: Profile of the Irechekovo kurgan (Iliev – Bakardzhiev 2020, Fig. 34)

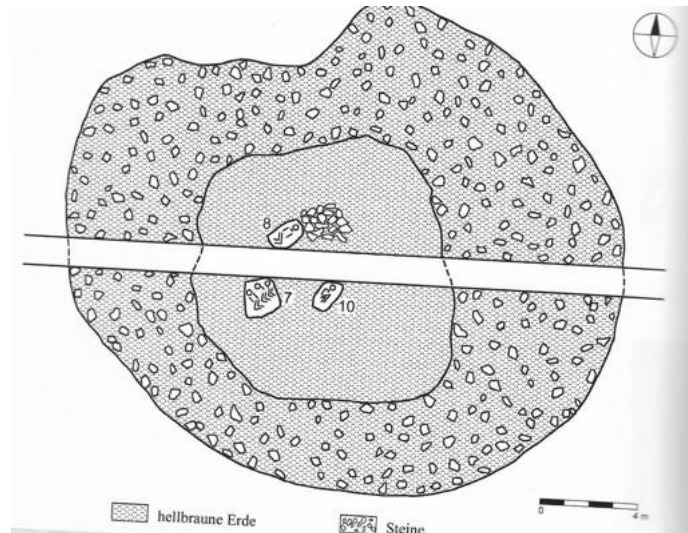


Fig. 27: Location of the graves of Irechekovo kurgan (Iliev – Bakardzhiev 2020, Fig. 35)

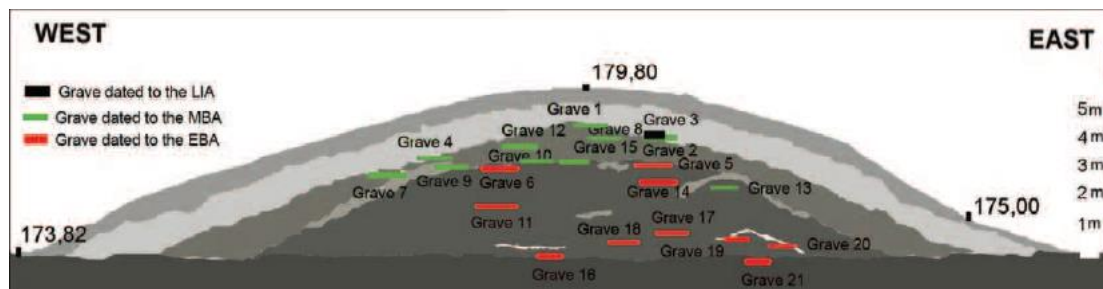


Fig. 28: Profile of the Lozianska mogila with all the uncovered graves (Agre 2008, Fig. 3)



Fig. 29: Grave no. 16 of Lozianska mogila; both the bodies are stained by ochre (Agre 2008, Fig. 2)



Fig. 30: Grave no. 14 of Lozianska Mogila; fragments of the wooden cover are visible above the deceased (Agre 2008, Fig. 4)

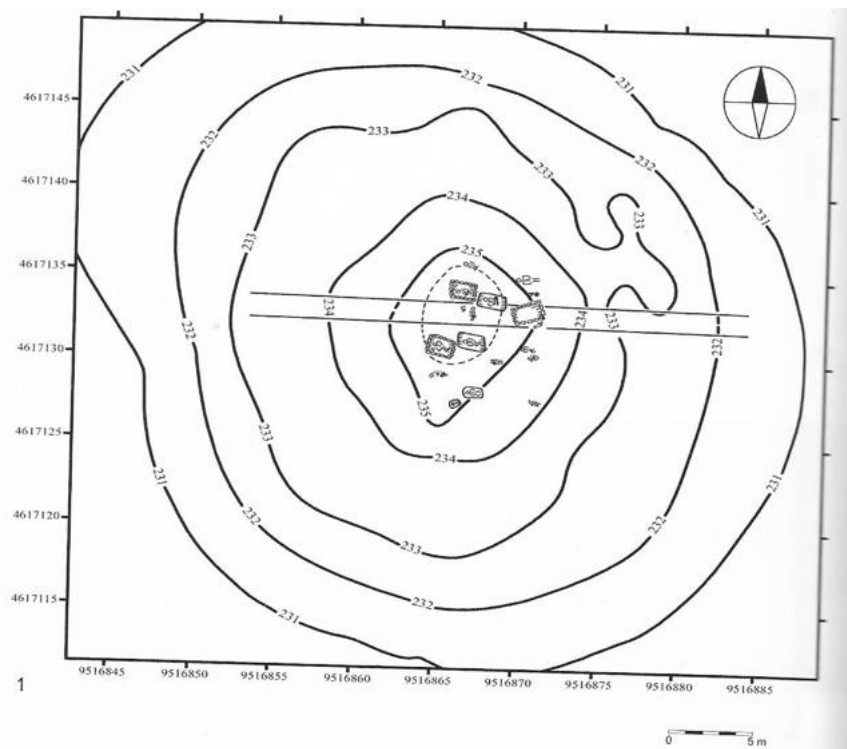


Fig. 31: Location of the graves present in Boyanovo 1 (Iliev – Bakardzhiev 2020, Fig. 40)



Fig. 32: The partially preserved hair rings of Grave no. 13 from Boyanovo 1 (Iliev – Bakardzhiev 2020, Fig. 51)



Fig. 33: Head of the deceased from Grave no. 13 of Boyanovo 1 (Iliev – Bakardzhiev 2020, Fig. 52)

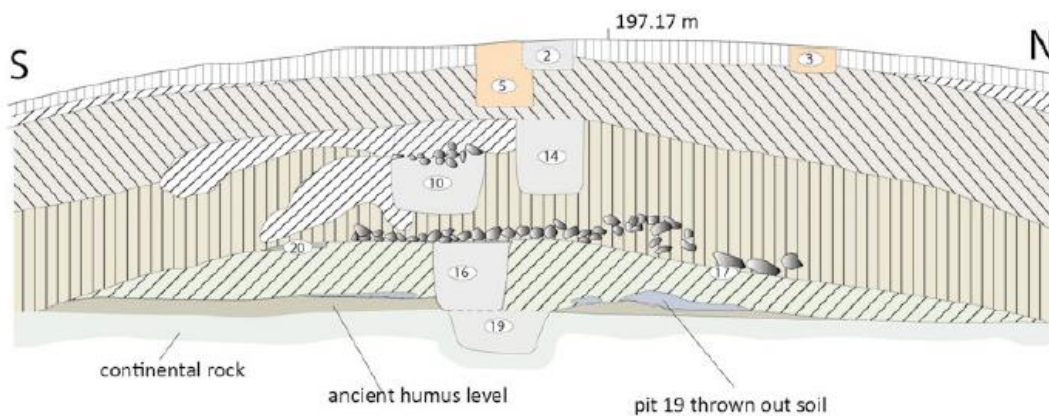


Fig. 34: Profile of Pamukli Bair (Alexandrov - Włodarczak 2022, Fig. 6)

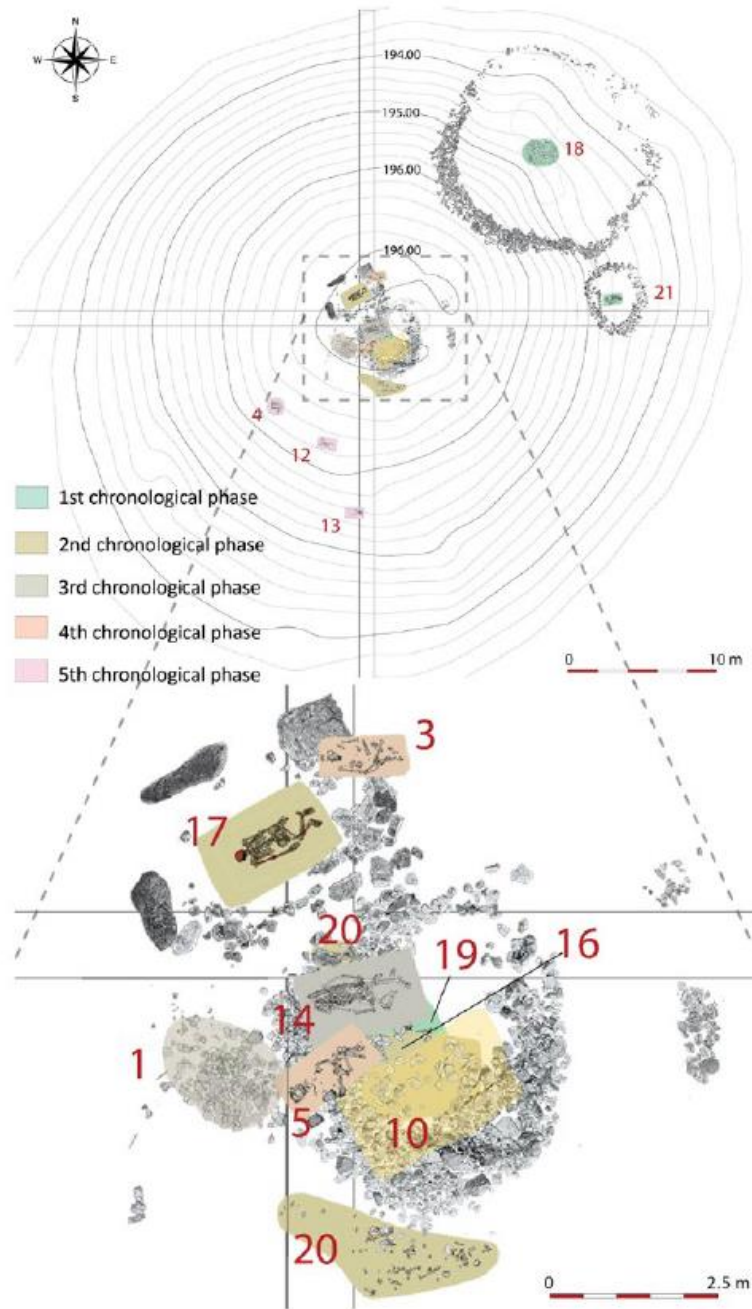


Fig. 35: Location of all the uncovered graves in Pamukli Bair (Alexandrov - Włodarczak 2022, Fig. 4)



Fig. 36: Photo of Grave no. 21 in Pamukli Bair; there is a lump of ochre visible next to his arm (Alexandrov - Włodarczak 2022, Fig. 12)



Fig. 37: Photos of Grave no. 17 from Pamukli Bair with two silver hair rings found inside (Włodarczak *et al.* 2023, Fig. 2)



Fig. 37: An artistic reconstruction of Grave no. 17 from Pamukli Bair with all its important features; by M. Podsiadło (Włodarczak *et al.* 2023, Fig. 4)



Feature no.	Relative chronology	Lab code	Age BP	Calendar age (68.2%)	Sample features
1	EBA	Poz-150129	4170 ± 35	2877–2677 BC	4,3%N, 16,4%C, 7,2%coll
2	Antiquity	Poz-141995	1605 ± 30	421–535 AD	0,9%N 6,0%C, 3,9%coll
3	EBA	Poz-141943	4080 ± 30	2836–2504 BC	0,6%N 6,3%C, 1,2%coll
4	MBA	Poz-141949	3365 ± 30	1733–1614 BC	0,9%N 7,1%C, 4,4%coll
5	EBA	Poz-141948	4115 ± 30	2850–2587 BC	0,7%N 5,6%C, 4,7%coll
10	EBA	Poz-141996	4290 ± 35	2920–2884 BC	1,9%N 9,5%C, 7,2%coll
10	EBA	Poz-141998	4260 ± 35	2912–2875 BC	2,5%N 11,5%C, 7,6%coll
12	MBA	Poz-141992	3365 ± 35	1736–1566 BC	1,1%N 7,3%C, 5,3%coll
13	MBA	Poz-141993	3410 ± 35	1744–1632 BC	1,6%N 8,2%C, 3,9%coll
14	EBA	Poz-141950	4105 ± 30	2846–2582 BC	0,6%C 5,2%C, 5,5%coll
16	EBA	Poz-141956	4465 ± 35	3328–3033 BC	0,7%N 5,2%C, 5,4%coll
16	EBA	Poz-150130	4300 ± 35	3002–2885 BC	2,3%N, 7,4%C, 6,2%coll
17	EBA	Poz-141946	4315 ± 35	3008–2890 BC	2,4%N 10,9%C, 8,3%coll
18	EBA	Poz-141953	4390 ± 40	3092–2923 BC	0,9%N 6,4%C, 2,3%coll
18	EBA	Poz-141997	4365 ± 35	3013–2918 BC	0,6%N 4,8%C, 4%coll
19	EBA	Poz-141947	4440 ± 35	3321–3016 BC	2,7%N 10,2%C, 9,5%coll
20	EBA	Poz-141954	4270 ± 35	2911–2881 BC	1,2%N 6,7%C, 5,7%coll
20	EBA	Poz-141999	4310 ± 35	3007–2887 BC	1,4%N 6,8%C, 5,1%coll
21	EBA	Poz-141952	4395 ± 30	3081–2928 BC	0,6%N 5,9%C, 2,8%coll

Fig. 38: Table of all the graves from Pamukli Bair with their radiocarbon dates (Alexandrov - Włodarczak 2022, Tab. 1)